 <b>HONDA</b> <b>INSTALLATION</b> <b>INSTRUCTIONS</b>	Accessory	Application	Publications No.
	<b>AIR CONDITIONER</b>	<b>ELEMENT (DX)</b>	<b>All 24107</b> Issue Date <b>DEC 2002</b>

**What's New**

The A/C kit and instructions for the 2003 Element are all new. Follow these instructions carefully.

**TOOLS AND SUPPLIES REQUIRED**

- Open-end wrench set
- 90-Degree hook-shaped tool
- Screwdrivers
- Socket wrench set
- 1/2" Drive breaker bar
- Torque wrench
- Refrigerant oil (R12 mineral oil or R134a PAG oil)
- Fender covers, floor mats, and seat covers
- HFC-134a refrigerant recovery/recycling/charging station
- Gloves
- Eye protection (face shield, safety goggles, etc.)
- Electronic leak detector
- Auto-tensioner wrench

**NOTICE**

- **Use only HFC-134a in this system;** do not use CFC 12 Refrigerant; do not install parts designed for use in a CFC system.
- **Use a charging station.** A/C charging stations and refrigerant recovery/recycling/charging stations minimize the release of CFCs and HFCs to the atmosphere. Use them for all A/C charging and service work according to their manufactures' instructions.
- **Do not overcharge.** This system requires only the amount of HFC-134a refrigerant shown below. If you overcharge the system, the engine and the A/C would malfunction.

500 to 550 grams
.50 to .55 kilograms
1.1 to 1.2 pounds
17.6 to 19.4 ounces

**INSTALLATION**

**NOTE:**

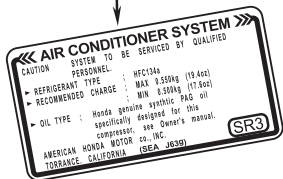
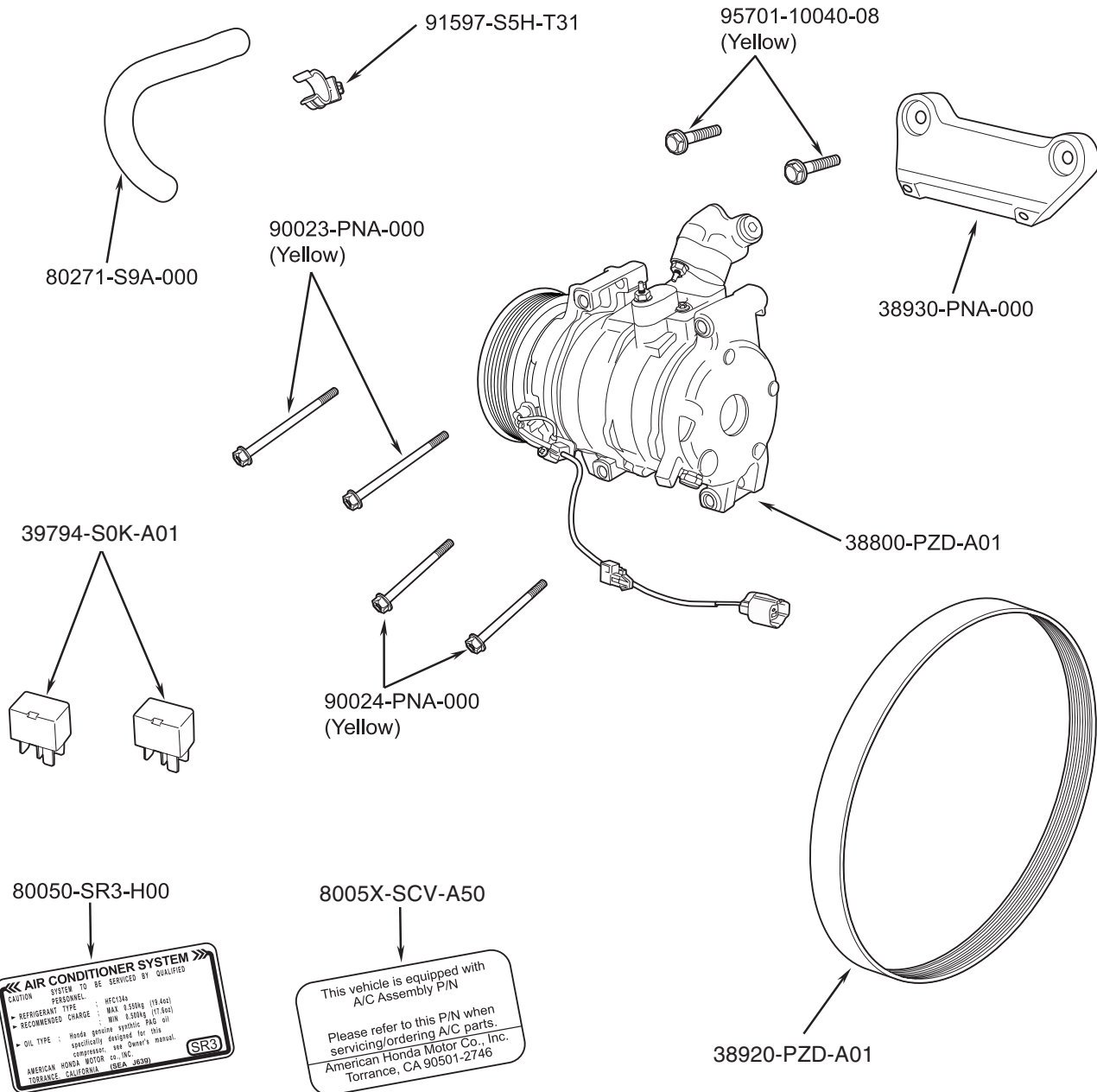
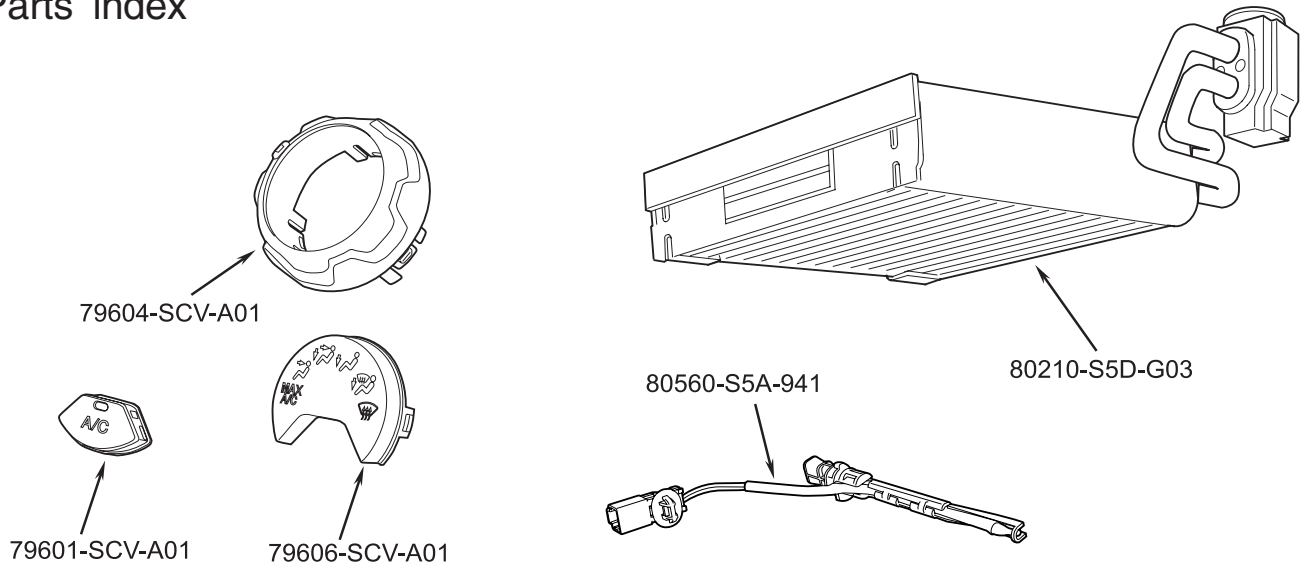
**Customer Information:** The information in these instructions is intended for use only by skilled technicians who have the proper tools, equipment, and training to correctly and safely add equipment to your car. These procedures should not be attempted by "do-it-yourselfers."

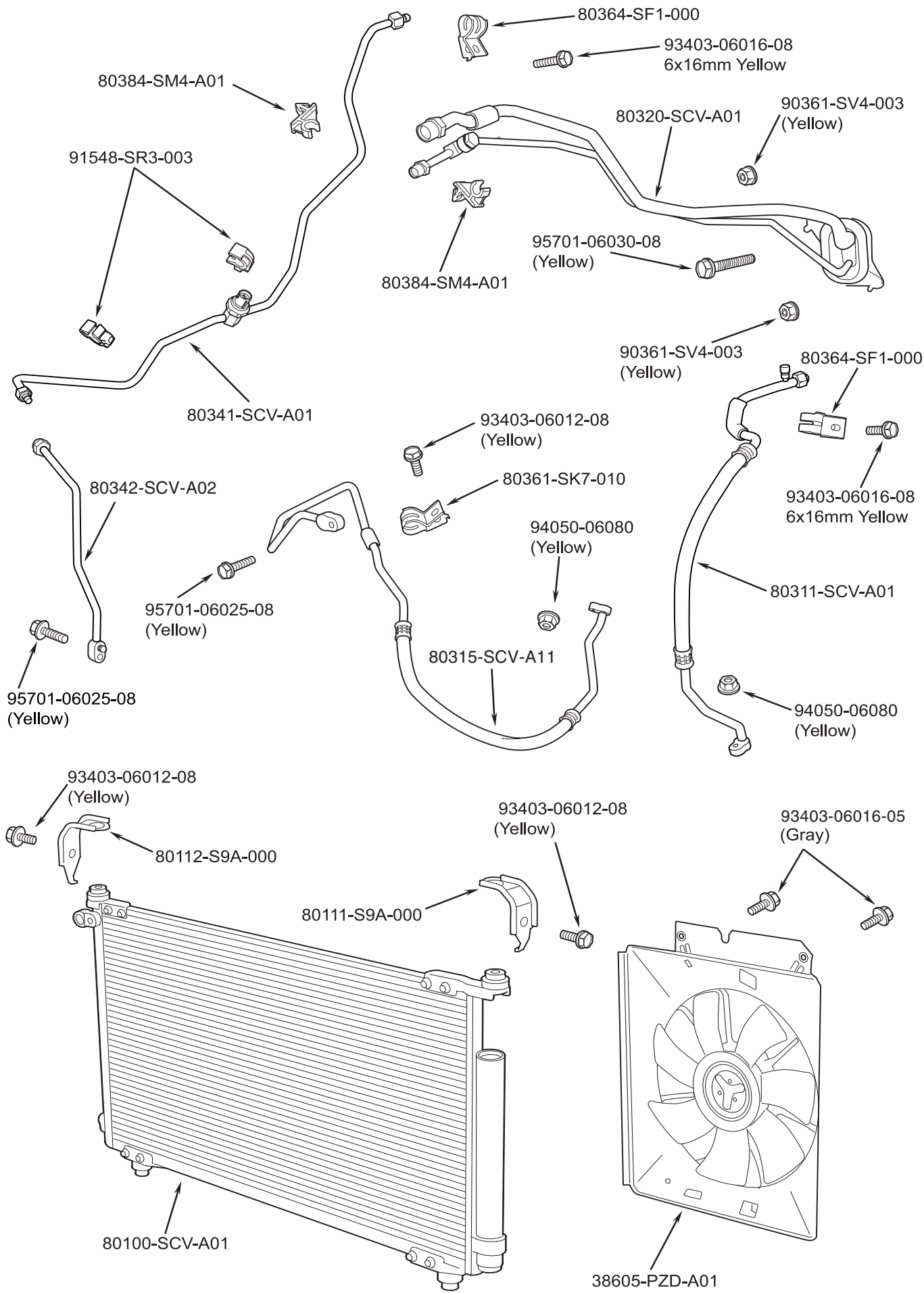
- **Write down the customer's radio station presets;** the radio memory will be erased when you disconnect the battery.
- **Make sure you install the right part.** Use the illustrations on pages 2 and 3 as a guide to check the parts before you install them.
- **Don't remove plugs and caps from fittings until the parts are ready to connect.** This will keep out moisture and dirt which could cause wear and damage.
- **Before you connect any line or hose, check and lube its O-ring.** Make sure the O-ring is there (inside the fitting), put a few drops of refrigerant oil on it and on the threads, then connect the fitting.
- You may use either type of refrigerant oil to lubricate O-rings and fittings.
- If you add or replace refrigerant oil in the system, use *only* this PAG oil: ND oil-8, P/N 38899-PR7-A01AH.
- **Route and secure the lines and hoses properly;** maintain clearance between them and surrounding parts.
- **Use two wrenches to tighten or loosen fittings;** hold one fitting in place while you tighten the other one against it.
- **Before you connect each connector, check its terminals.** Make sure they aren't bent or out of place.

**NOTICE**

**Don't overtighten; you could damage the fittings.** Before you tighten a fitting, check the torque listed for it. If leaks are caused by faulty O-rings, overtightening the fitting won't help.

# Parts index





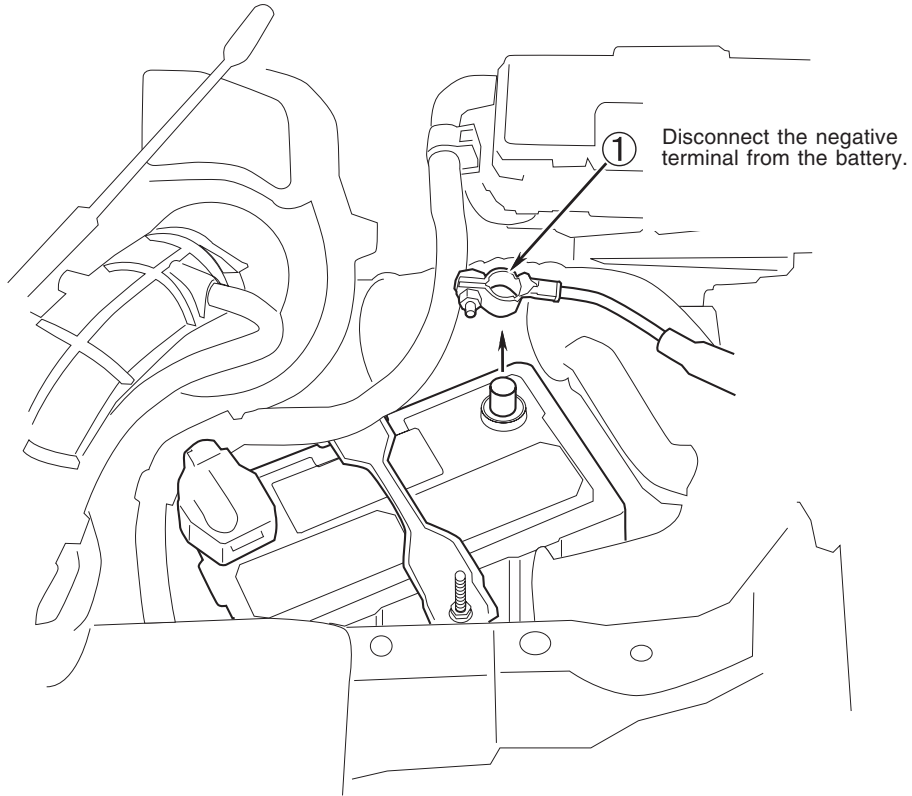
# PARTS LIST

## KIT No.80000-SCV-A50

COMPRESSOR	38800-PZD-A01	1
COMPRESSOR BRACKET	38930-PNA-000	1
COMPRESSOR BELT	38920-PZD-A01	1
CONDENSER FAN	38605-PZD-A01	1
CONDENSER	80100-SCV-A01	1
LEFT UPPER CONDENSER BRACKET	80111-S9A-000	1
RIGHT UPPER CONDENSER BRACKET	80112-S9A-000	1
SUCTION HOSE	80311-SCV-A01	1
SUCTION HOSE CLAMP	80361-SK7-010	1
SUCTION PIPE CLAMP	80364-SF1-000	2
DISCHARGE HOSE	80315-SCV-A11	1
A/C PIPE UNIT	80320-SCV-A01	1
RECEIVER PIPE A	80341-SCV-A01	1
RECEIVER PIPE B	80342-SCV-A02	1
RECEIVER PIPE CLIP B	80384-SM4-A01	2
CLIP 8mm	91548-SR3-003	2
EVAPORATOR	80210-S5D-G03	1
EVAPORATOR SENSOR	80560-S5A-941	1
DRAIN HOSE	80271-S9A-000	1
DRAIN HOSE CLIP	91597-S5H-T31	1
POWER RELAY	39794-S0K-A01	2
A/C INFORMATION LABEL	80050-SR3-H00	1
A/C KIT LABEL	8005X-SCV-A50	1
A/C KNOB	79601-SCV-A01	1
TURN DIAL COMP	79604-SCV-A01	1
A/C MODE DISPLAY	79606-SCV-A01	1
WASHER BOLT 6x16mm (GRAY)	93403-06016-05	2
WASHER BOLT 6x12mm (YELLOW)	93403-06012-08	3
WASHER BOLT 6x16mm (YELLOW)	93403-06016-08	2
FLANGE BOLT 6x25mm (YELLOW)	95701-06025-08	2
FLANGE BOLT 6x30mm (YELLOW)	95701-06030-08	1
FLANGE BOLT 10x40mm (YELLOW)	95701-10040-08	2
FLANGE BOLT 8x65mm (YELLOW)	90024-PNA-000	2
FLANGE BOLT 8x80mm (YELLOW)	90023-PNA-000	2
FLANGE NUT 6mm (YELLOW)	94050-06080	2
PAINT CUTTING NUT 6mm (YELLOW)	90361-SV4-003	2

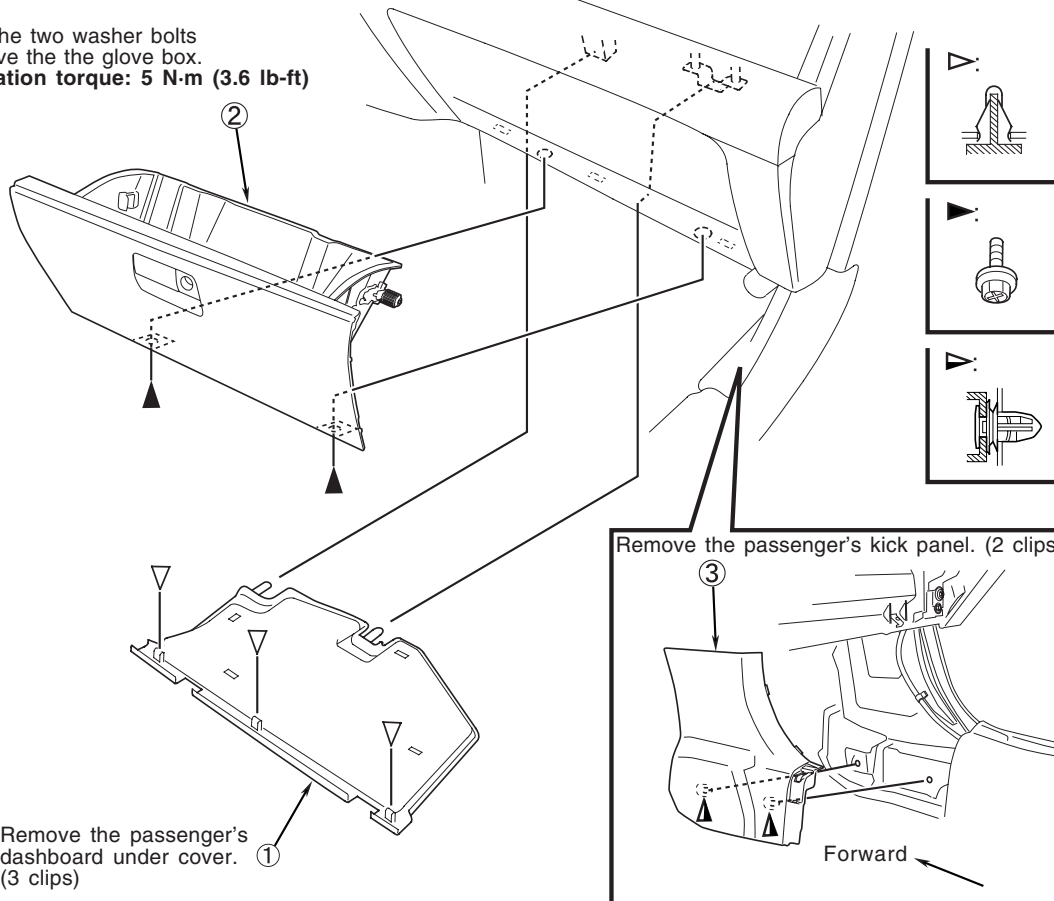
## 1. Remove the negative battery cable.

NOTE: Do not allow the negative cable to make contact with the positive cable.

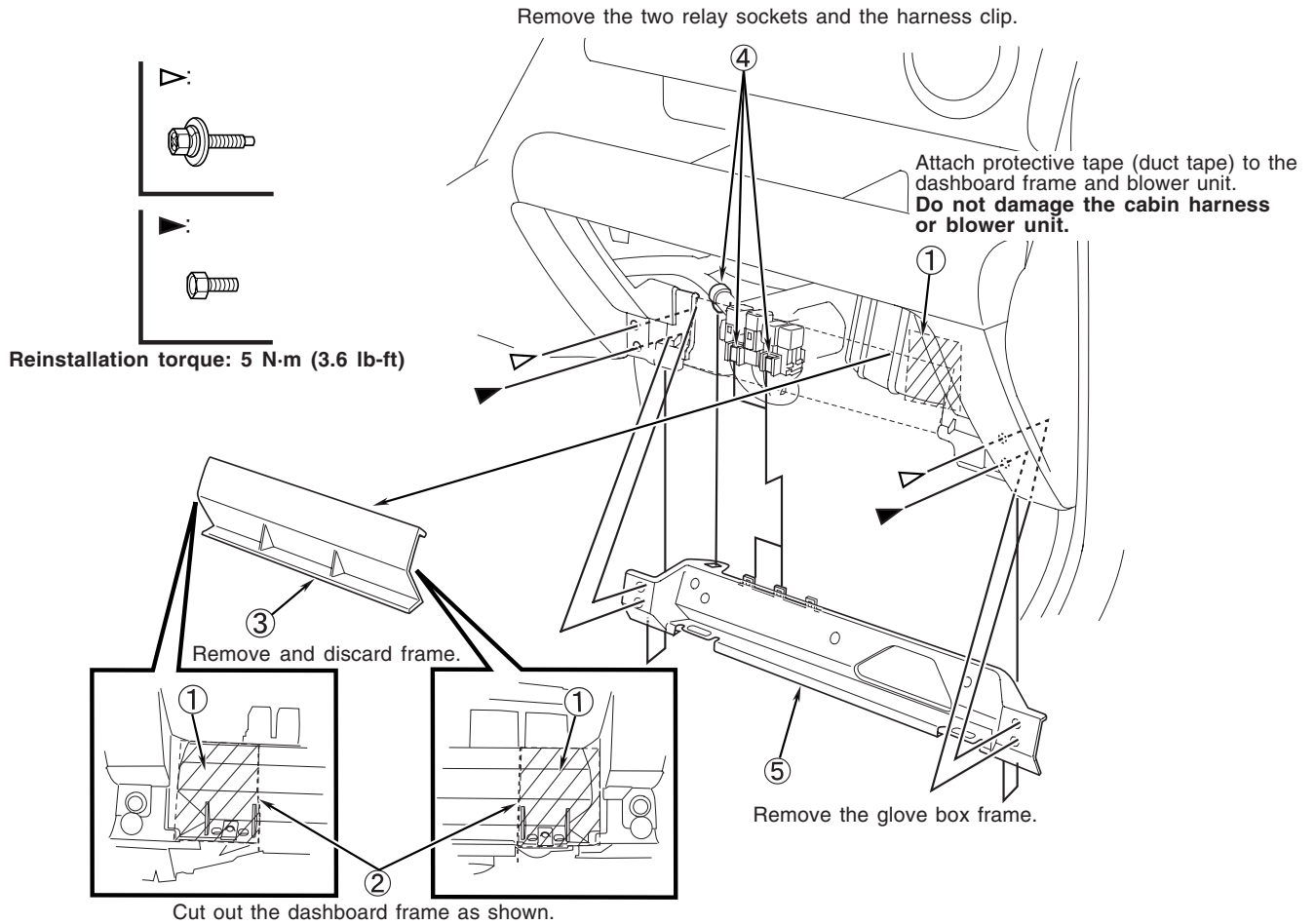


## 2. Remove the passenger's dashboard under cover and glove box.

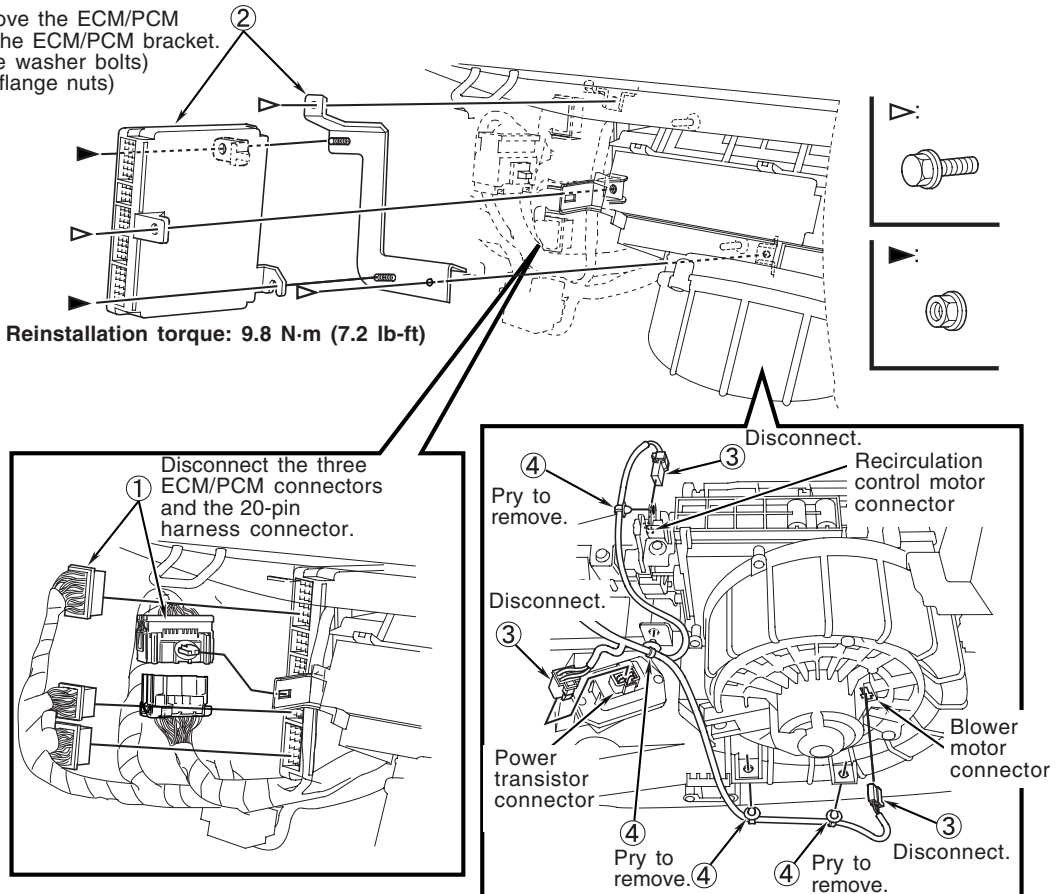
Remove the two washer bolts and remove the the glove box.  
Reinstallation torque: 5 N·m (3.6 lb-ft)



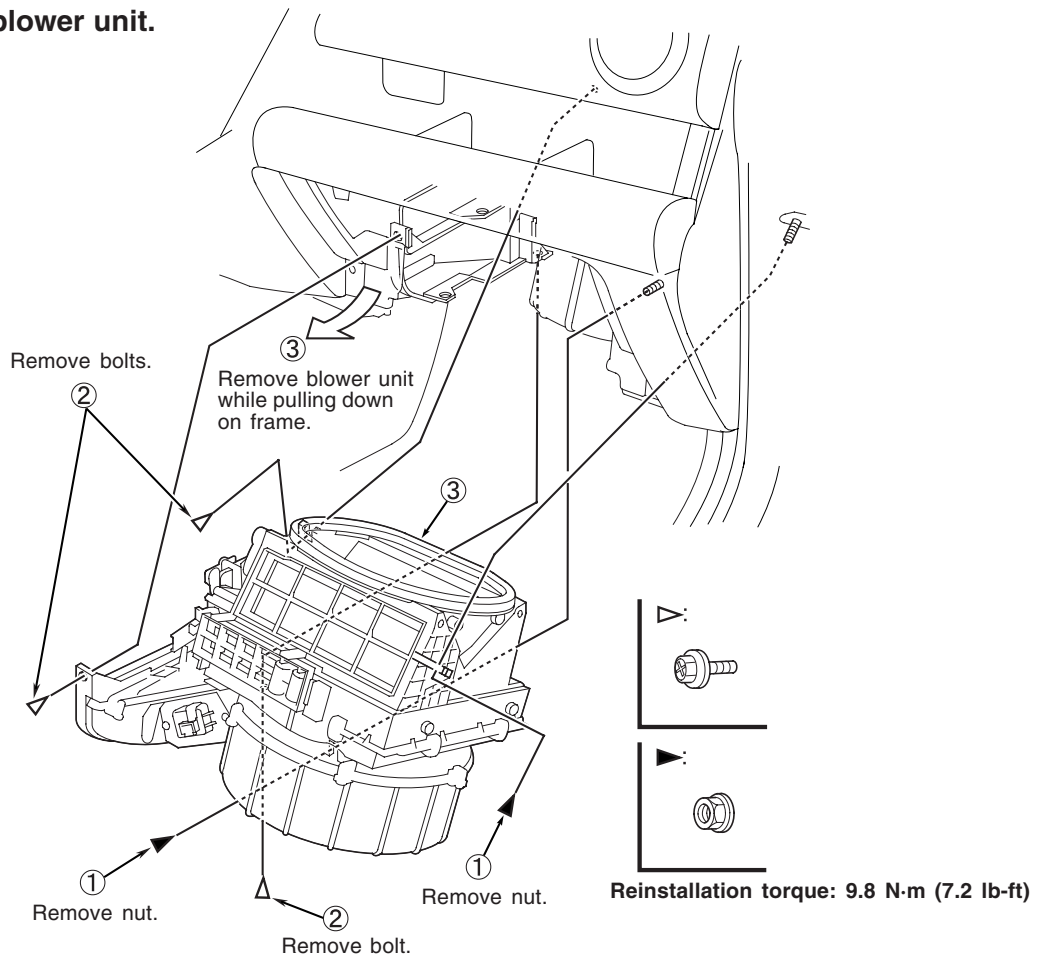
### 3. Cut out the dashboard frame and remove the glove box frame.



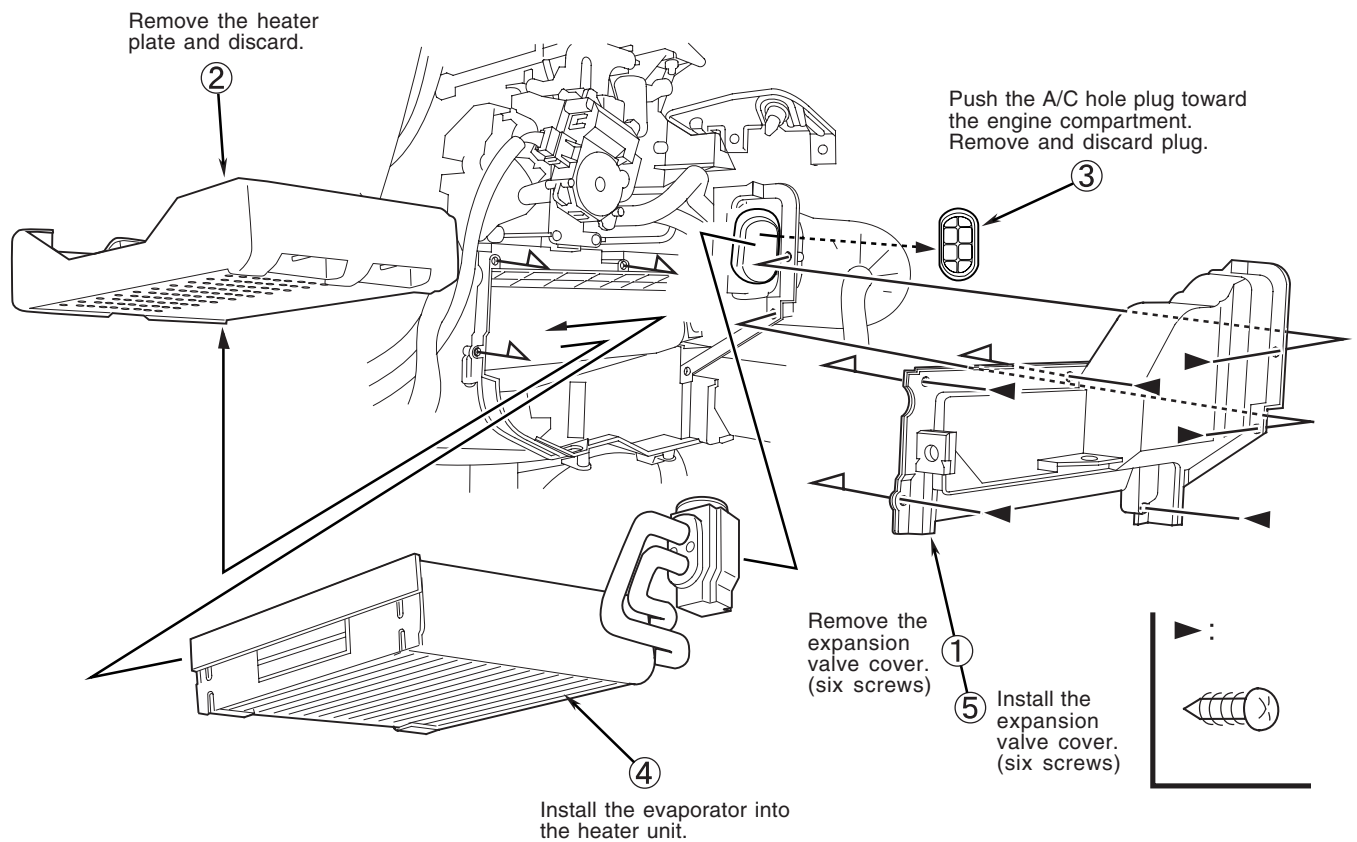
### 4. Remove the ECM/PCM and disconnect the connectors.



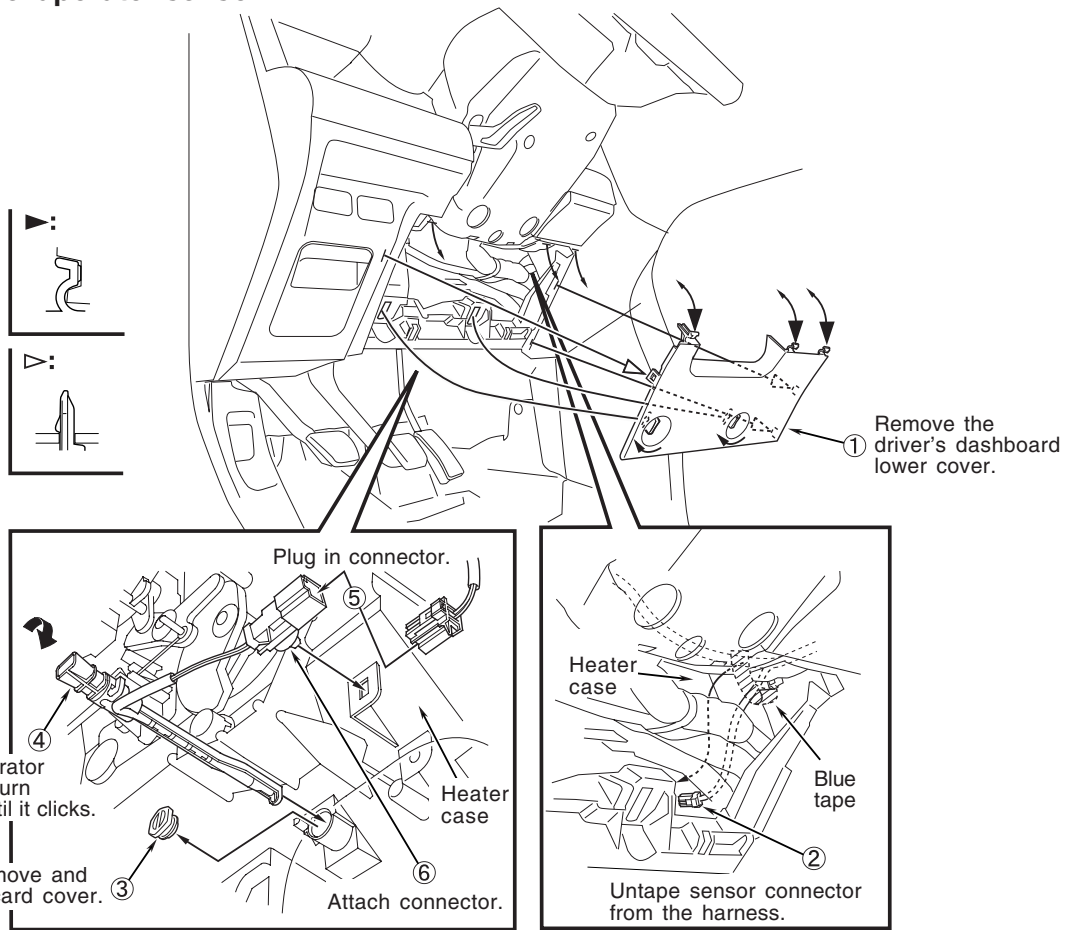
## 5. Remove the blower unit.



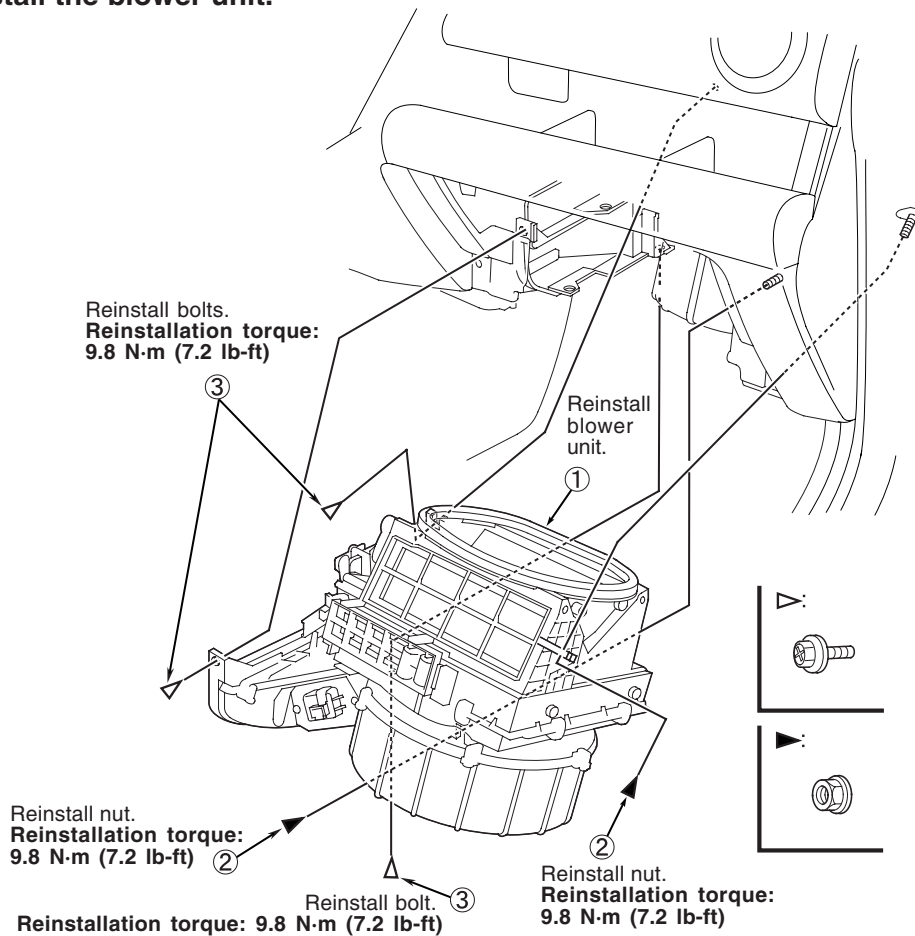
## 6. Install the evaporator.



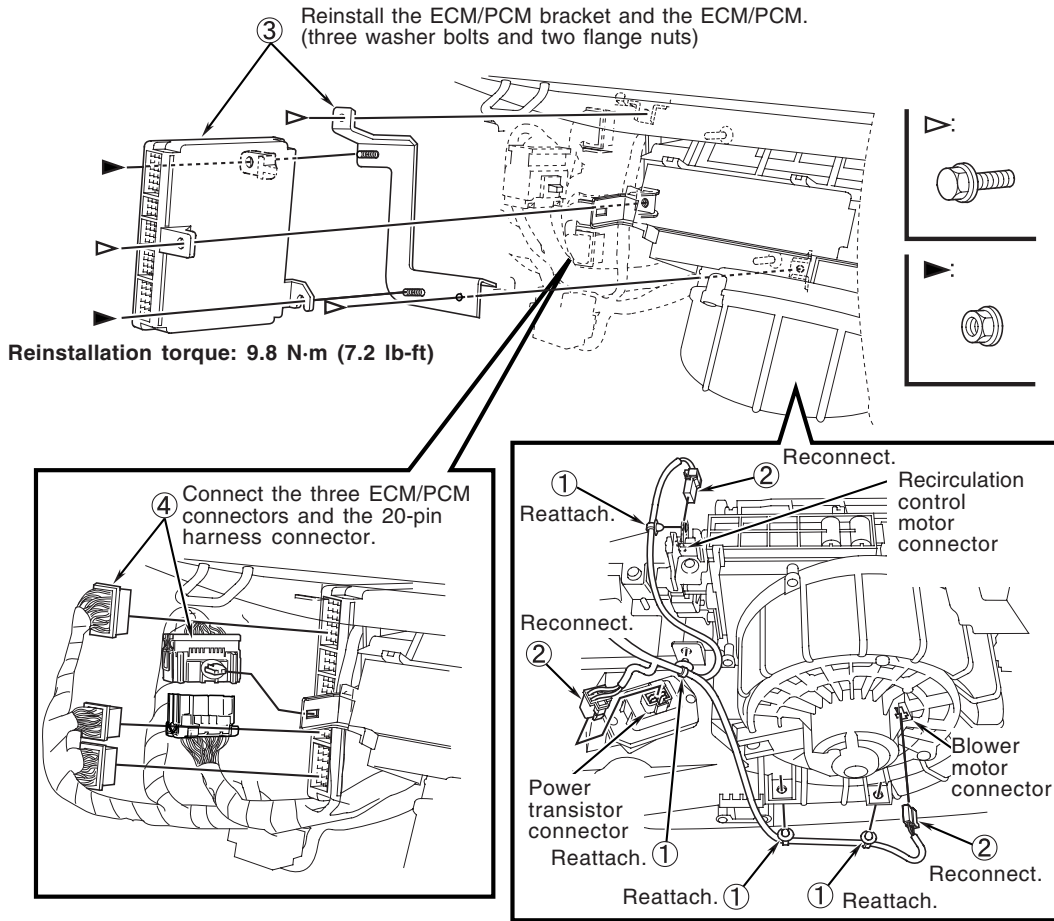
**7. Install the evaporator sensor.**



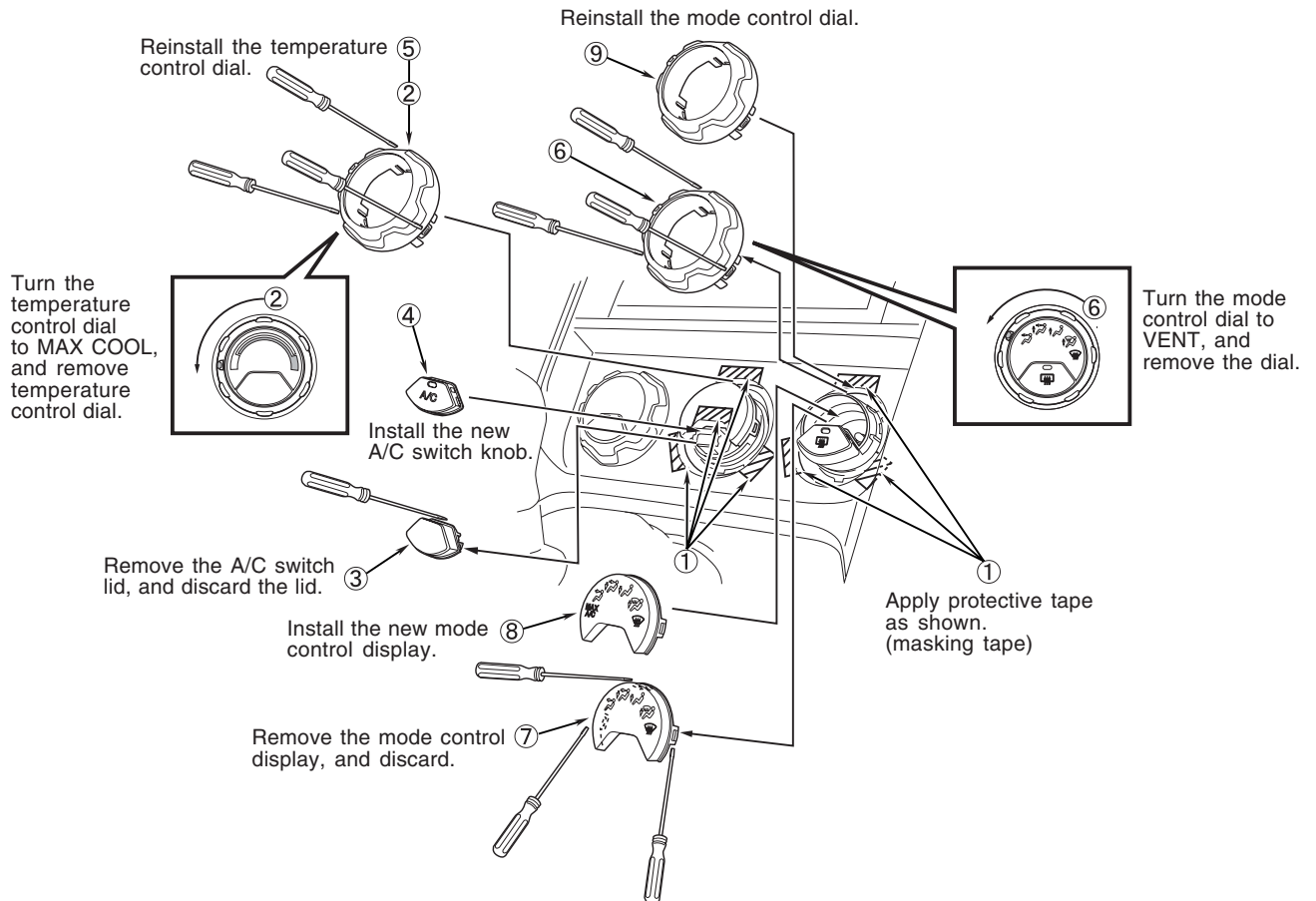
**8. Reinstall the blower unit.**



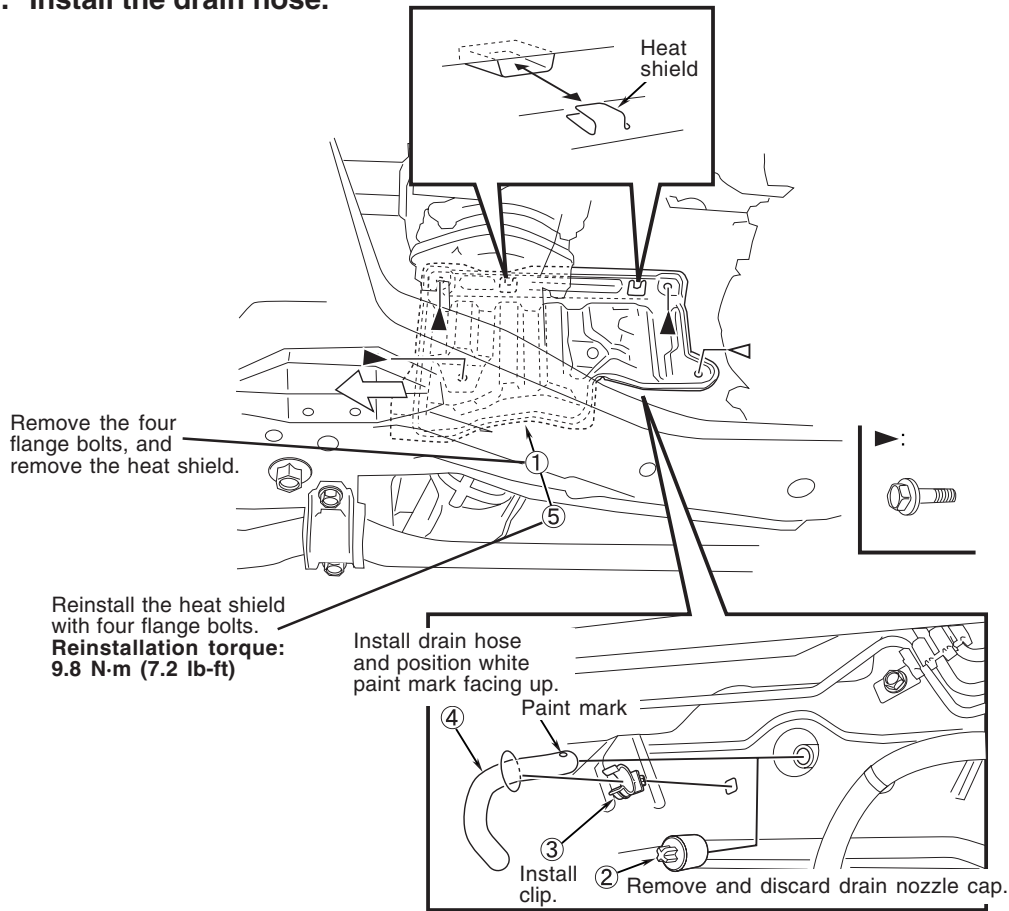
**9. Reinstall the ECM/PCM unit and the connectors.**



**10. Install the A/C switch knob and the A/C mode display.**



## 11. Install the drain hose.



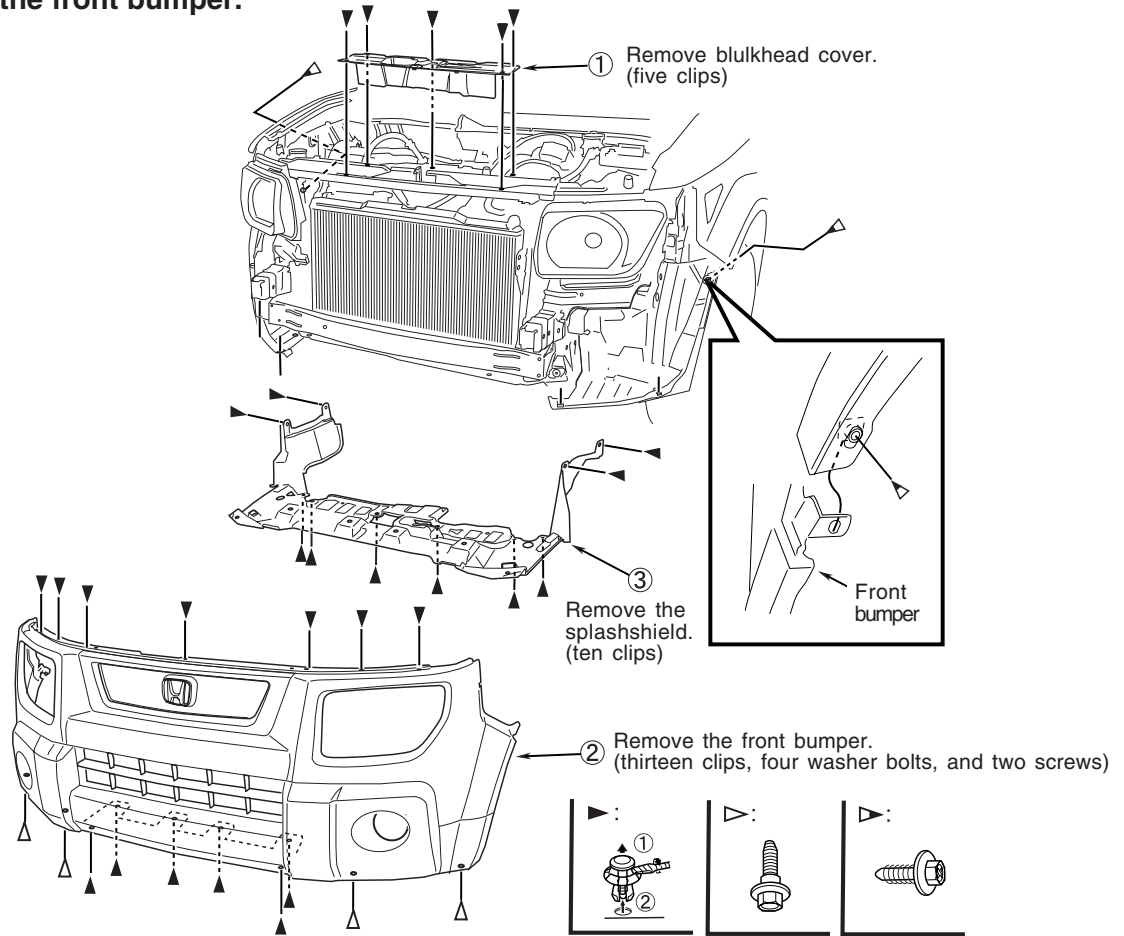
## 12. Reinstall the removed cabin parts.

- ☑ Check if completed.

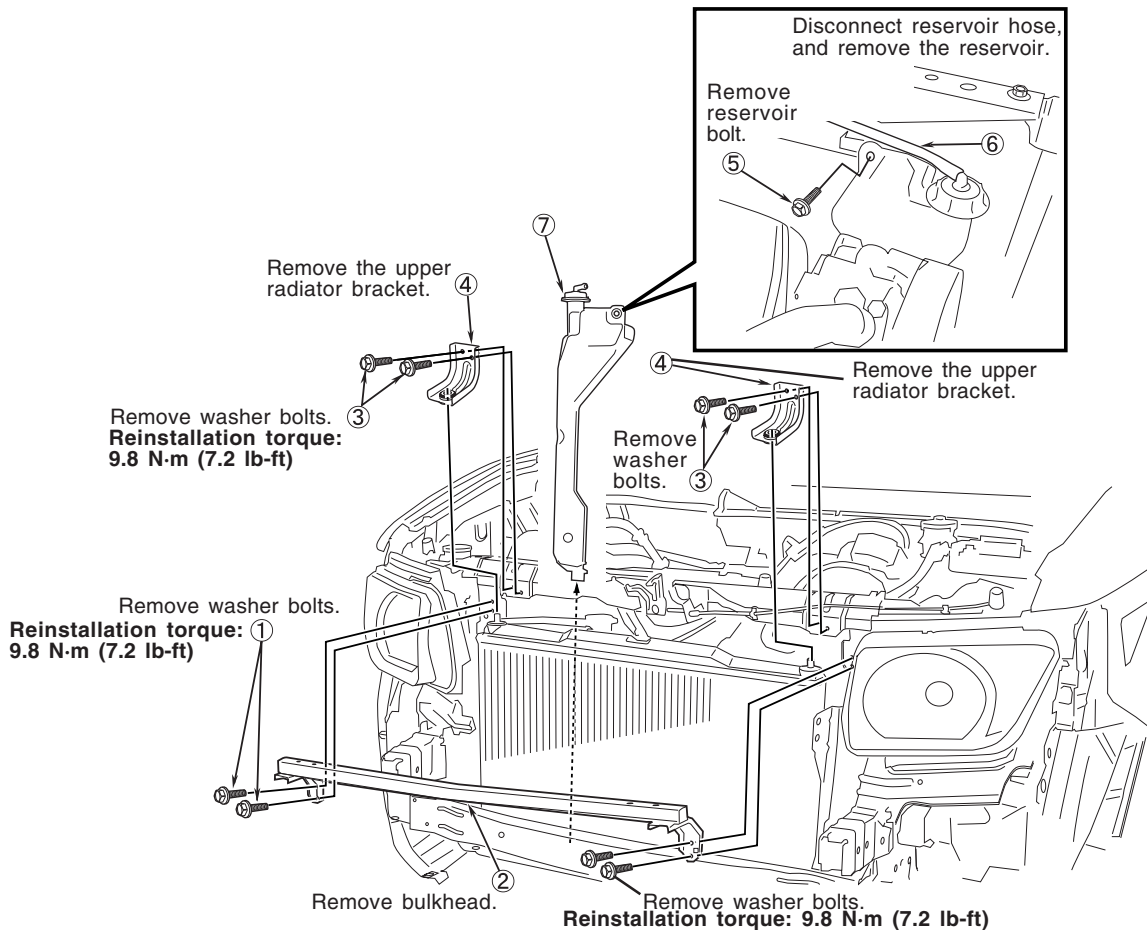
### Removed parts

- Passenger's dashboard under cover
- Glove box
- Passenger's kick panel
- Right side kick panel
- Glove box frame
- Relay sockets and harness clip
- Driver's dashboard lower cover.

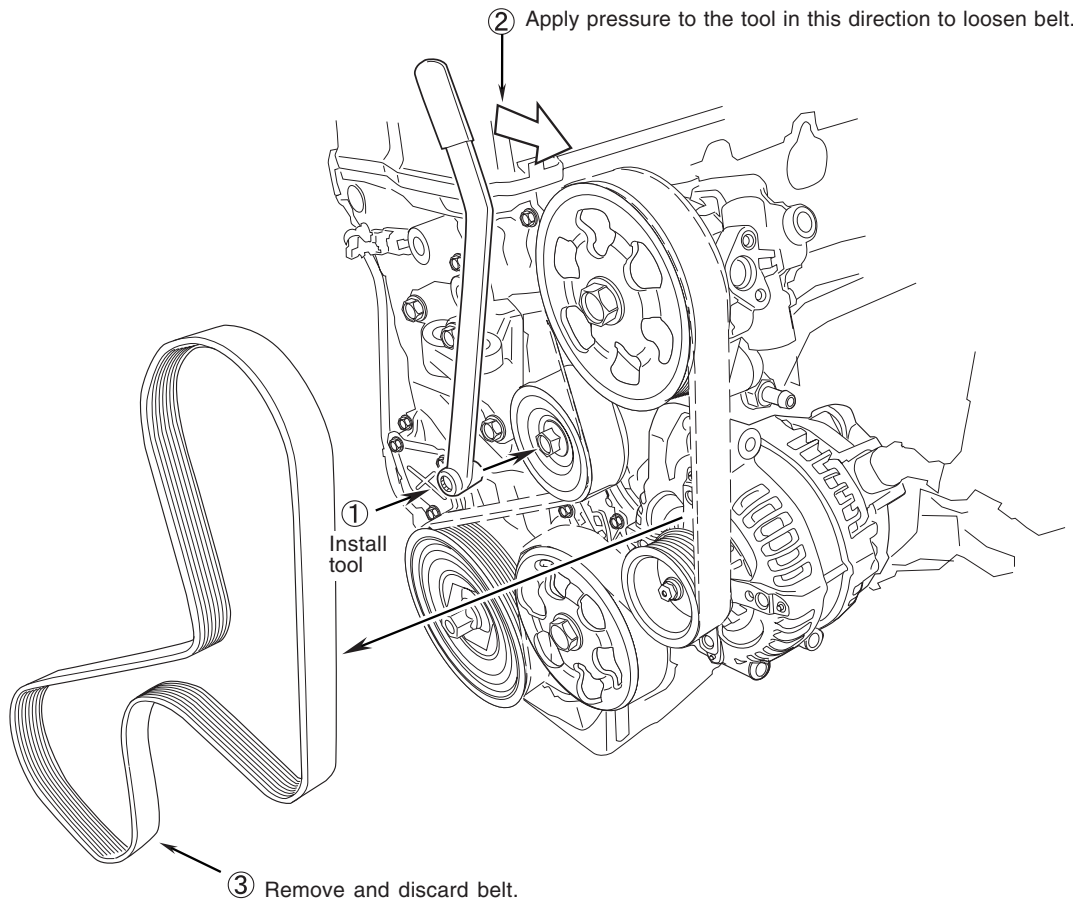
### 13. Remove the front bumper.



### 14. Remove the bulkhead and upper radiator bracket.

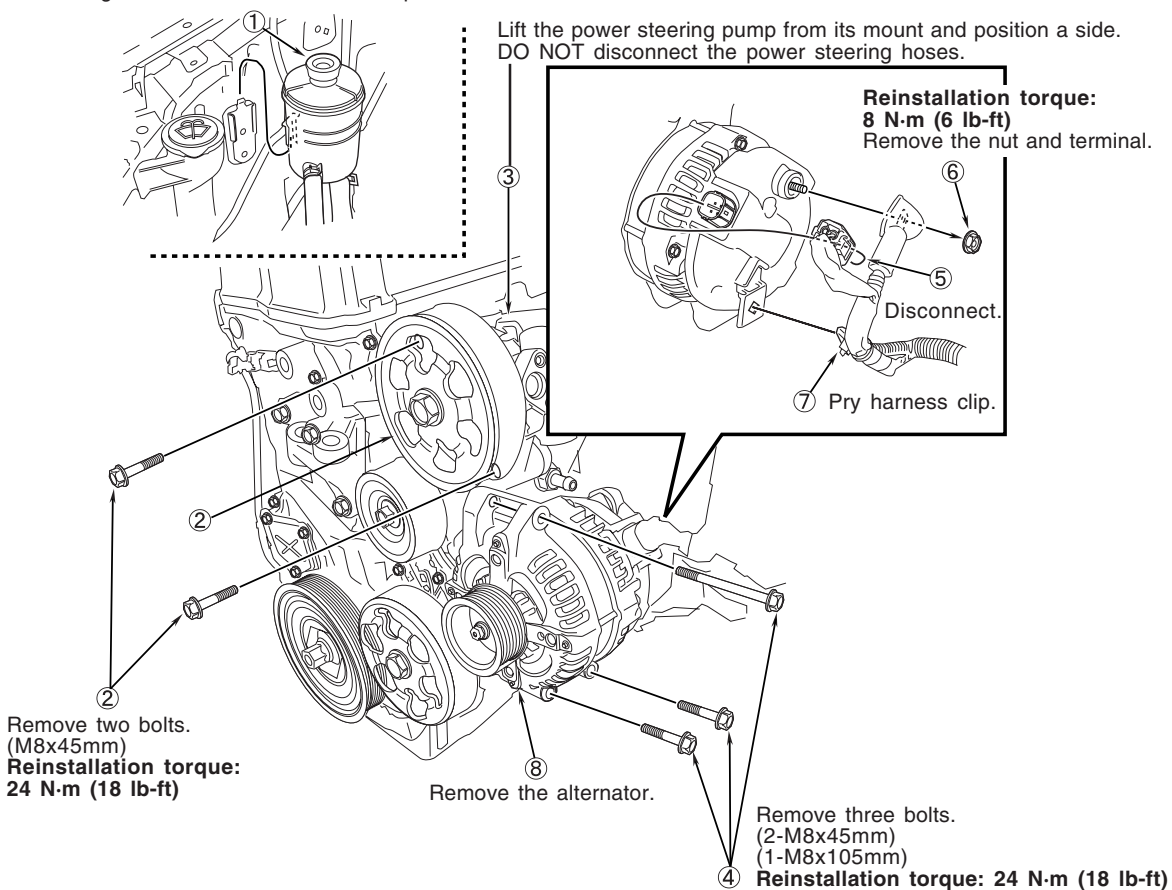


## 15. Remove the alternator belt.



## 16. Remove the power steering pump and alternator.

Lift the power steering reservoir from its mount and position a side.

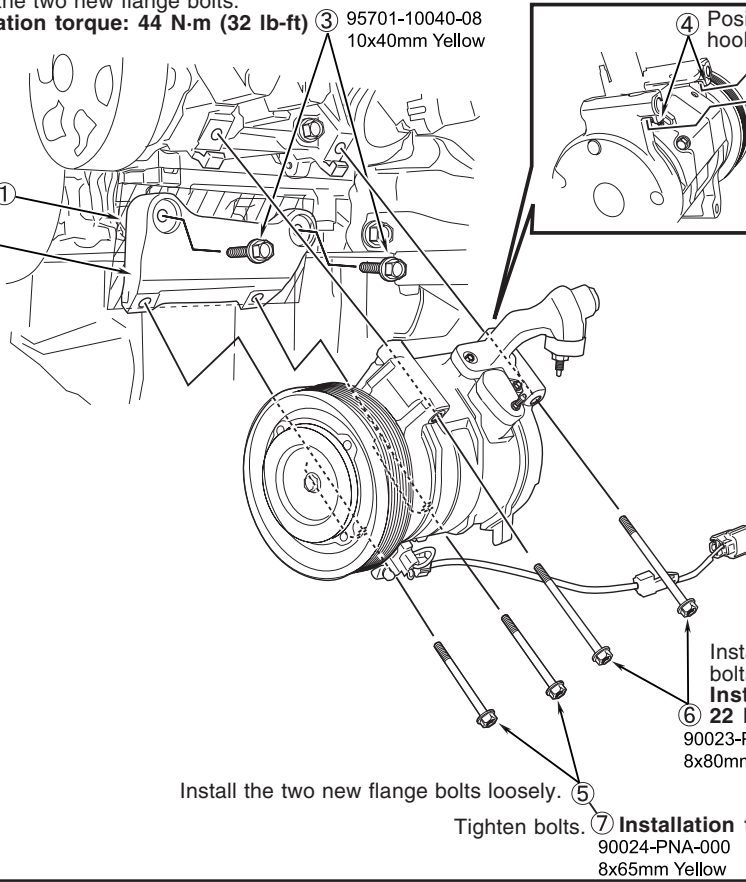
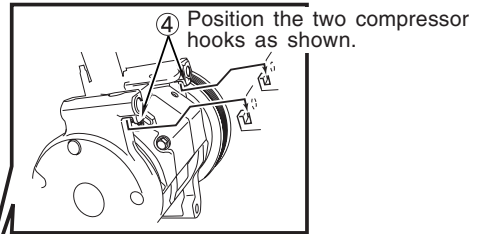


## 17. Install the compressor bracket and compressor.

Install the two new flange bolts.  
**Installation torque: 44 N-m (32 lb-ft)**  
 ③ 95701-10040-08  
 10x40mm Yellow

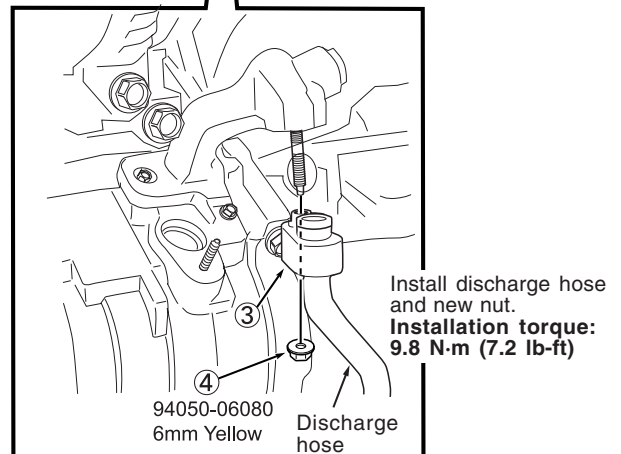
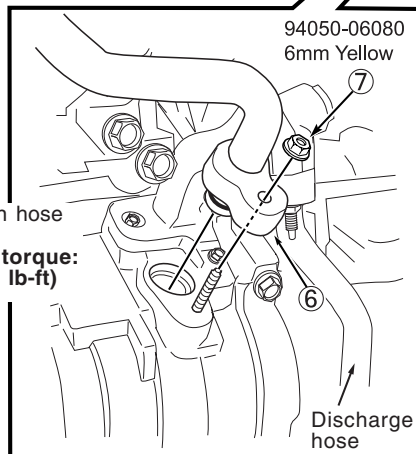
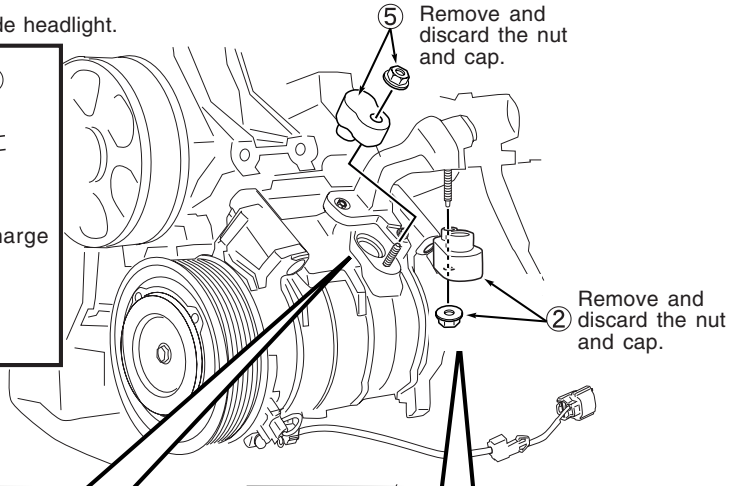
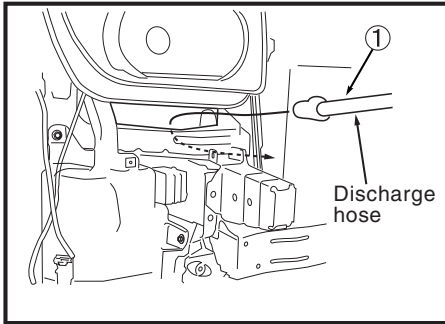
Clean the area where the compressor bracket will attach.

①  
 ②  
 Install the compressor bracket.

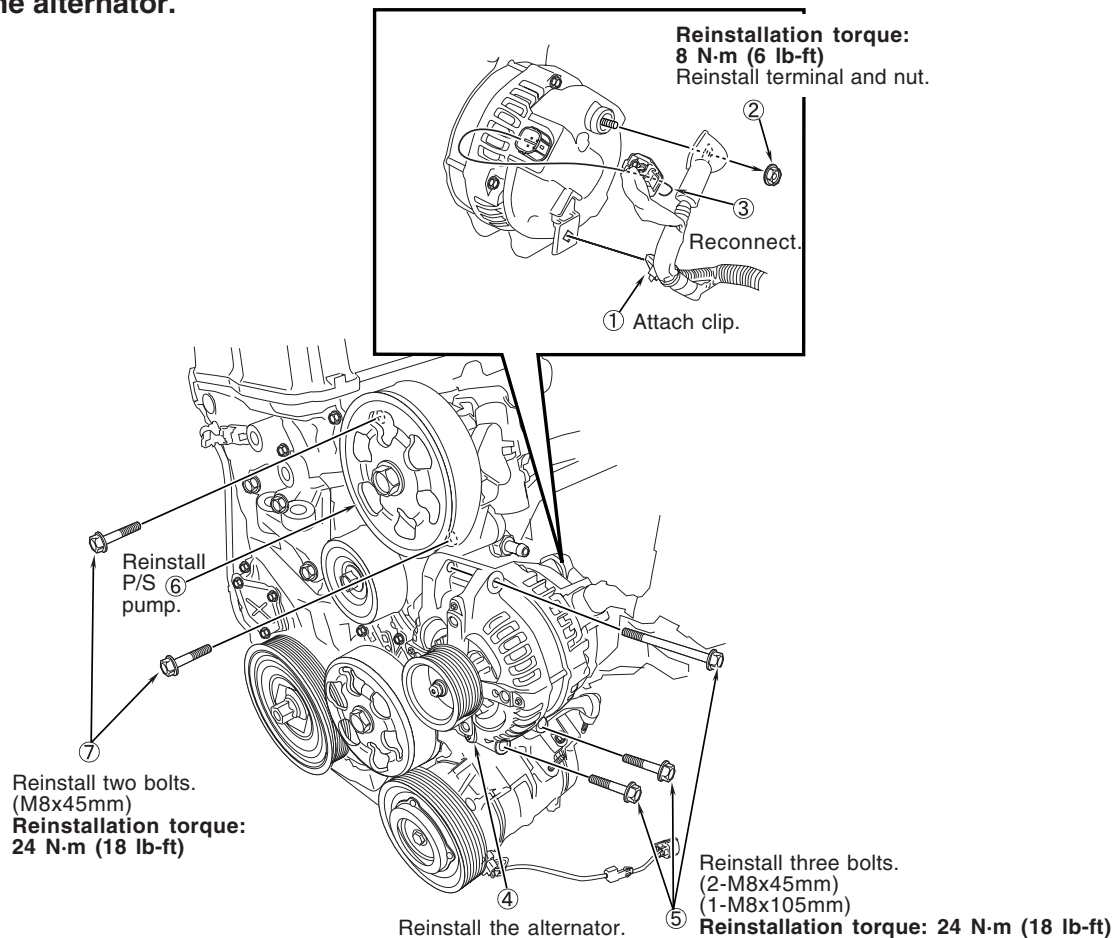


## 18. Install the suction hose and the discharge hose (compressor side).

Route the discharge hose under the right side headlight.

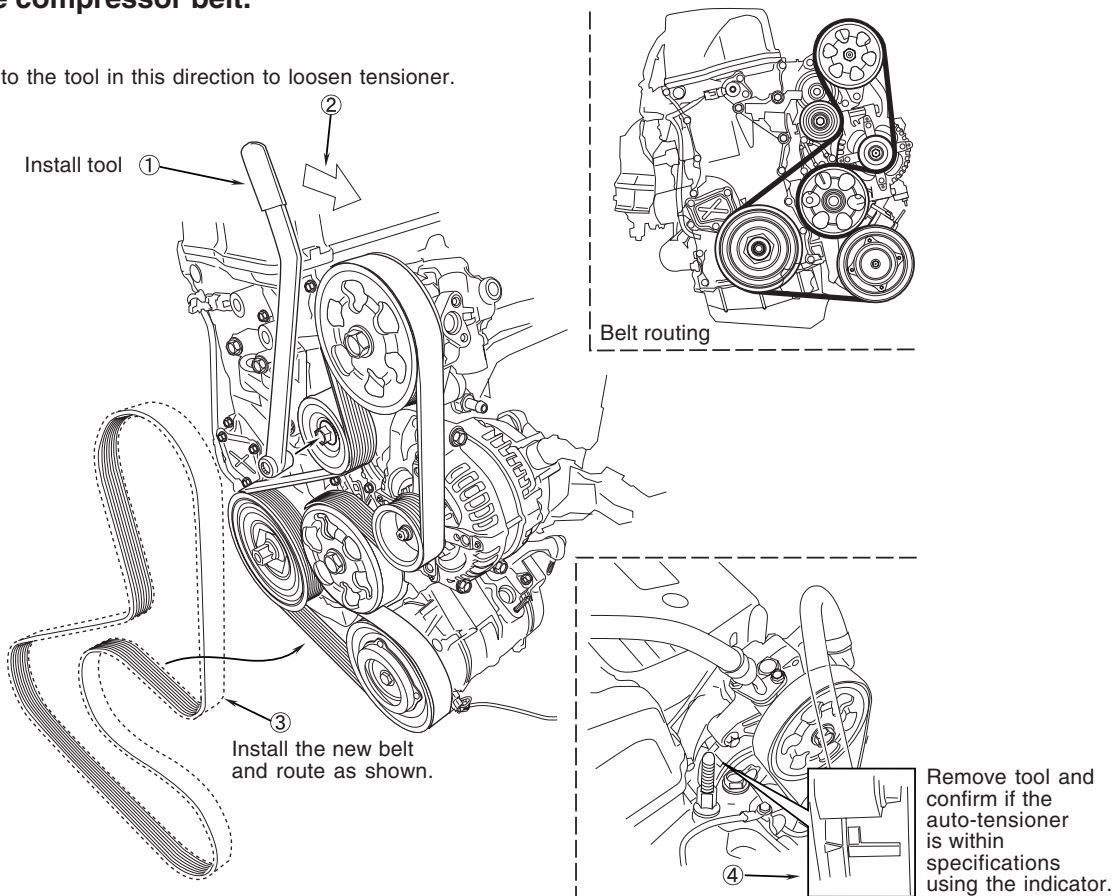


## 19. Reinstall the alternator.

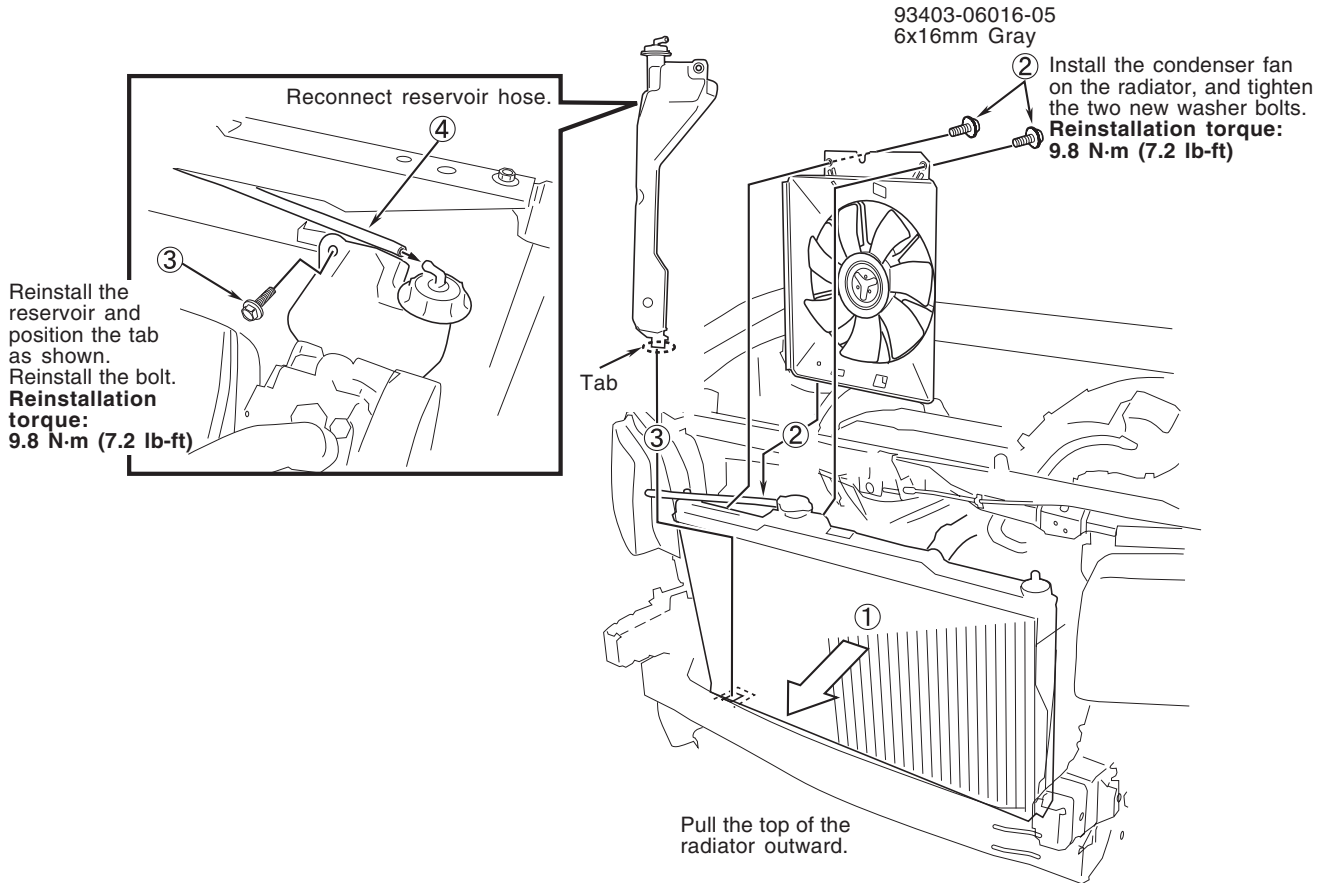


## 20. Install the compressor belt.

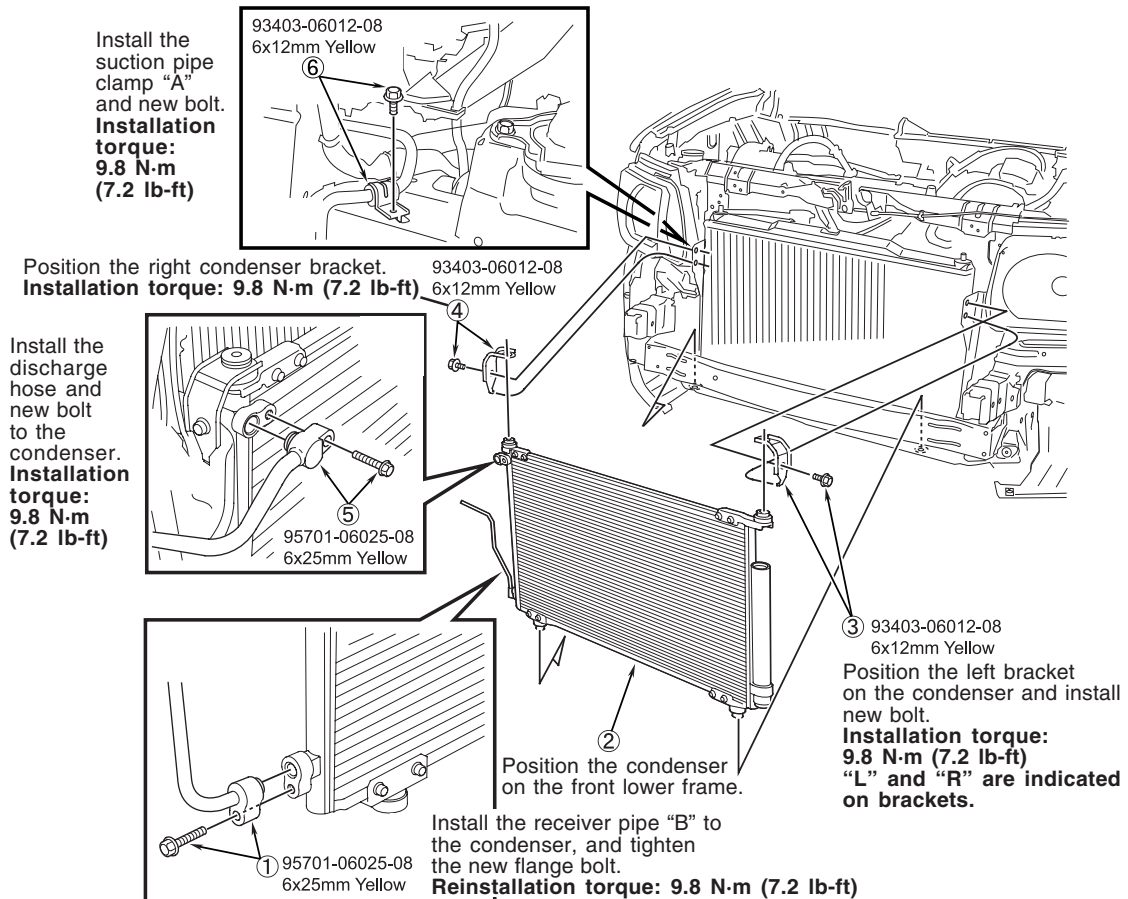
Apply pressure to the tool in this direction to loosen tensioner.



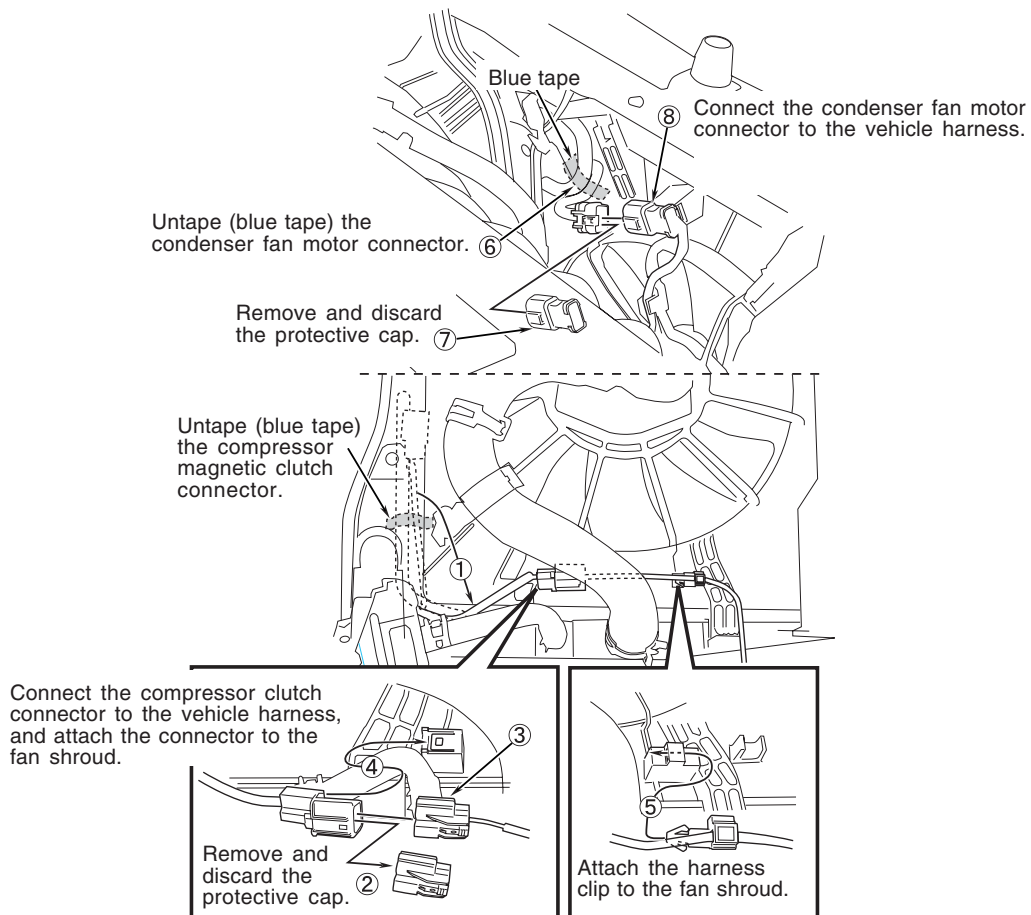
## 21. Install the condenser fan.



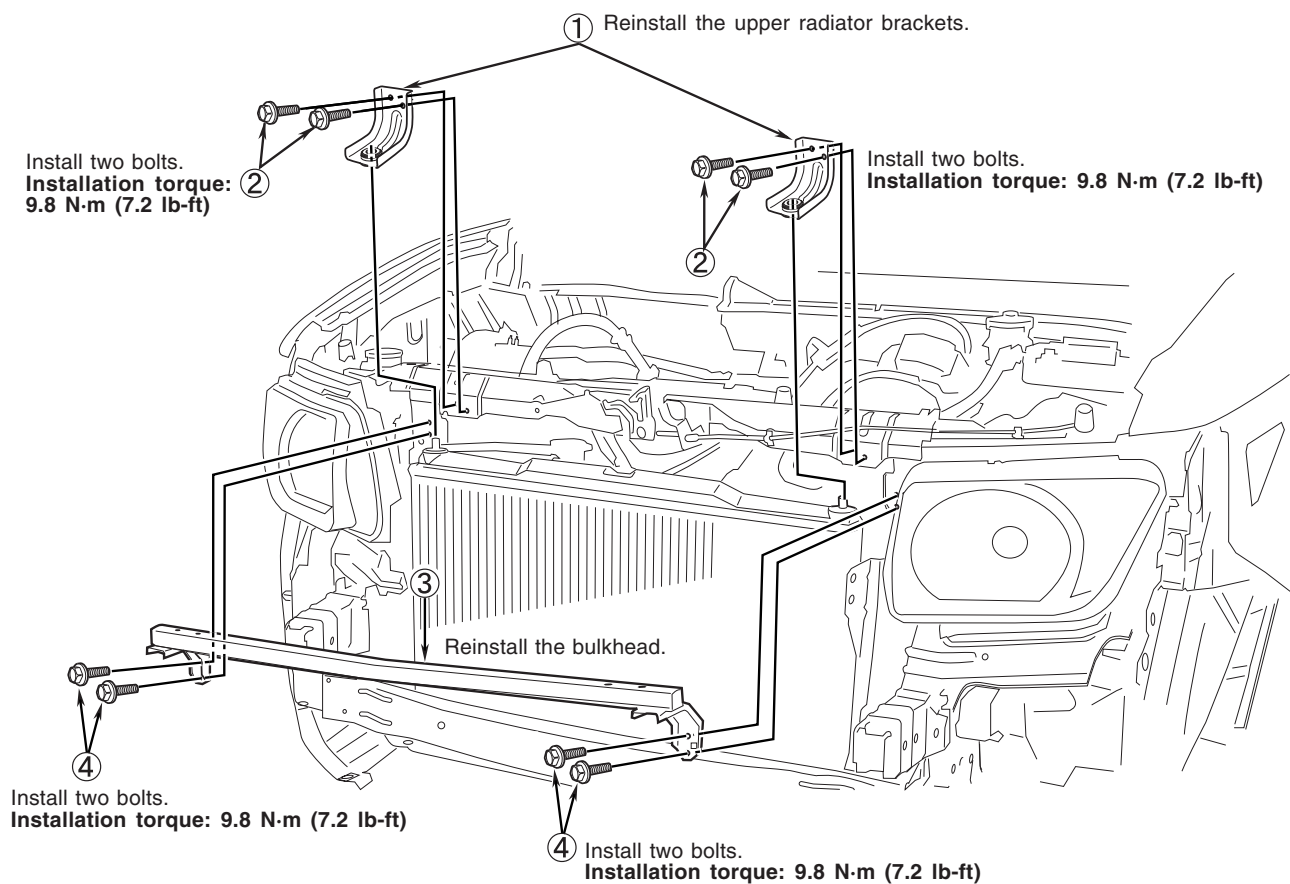
## 22. Install the condenser.



## 23. Connect the vehicle harness.



## 24. Reinstall the bulkhead and upper radiator bracket.

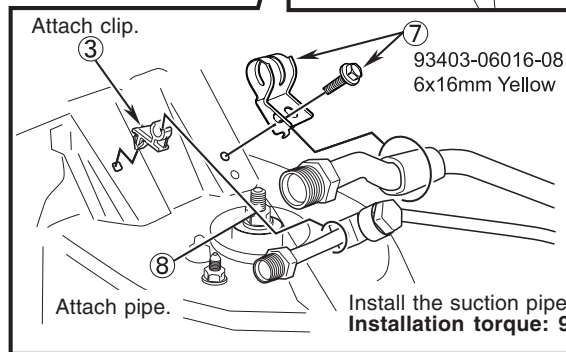
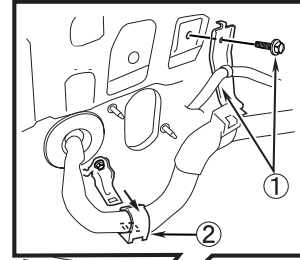
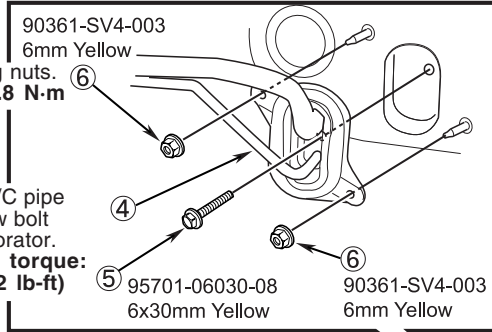


## 25. Install the A/C pipe unit.

Install new paint cutting nuts.  
Installation torque: 9.8 N-m  
(7.2 lb-ft)

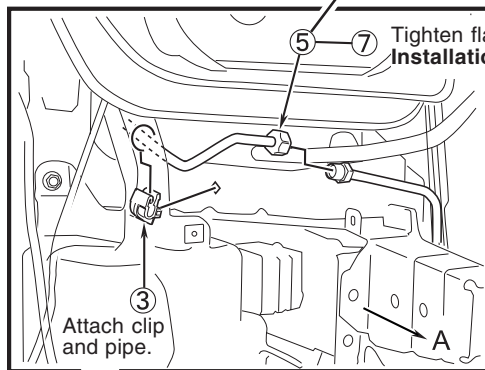
Install the A/C pipe unit with new bolt to the evaporator.  
Installation torque: 9.8 N-m (7.2 lb-ft)

Remove the flange bolt, bracket, and disconnect the harness clip.

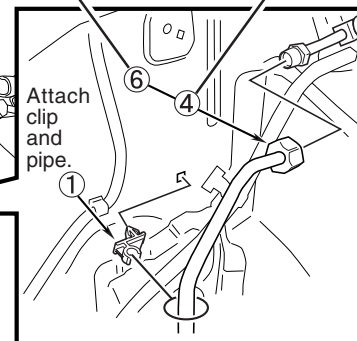


## 26. Install the receiver pipe A.

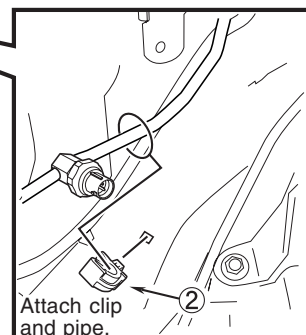
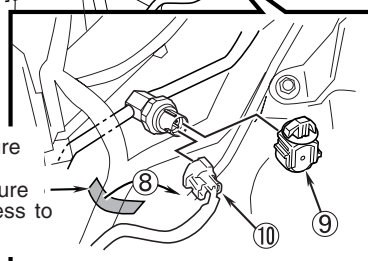
Install receiver pipe "A" and tighten loosely.



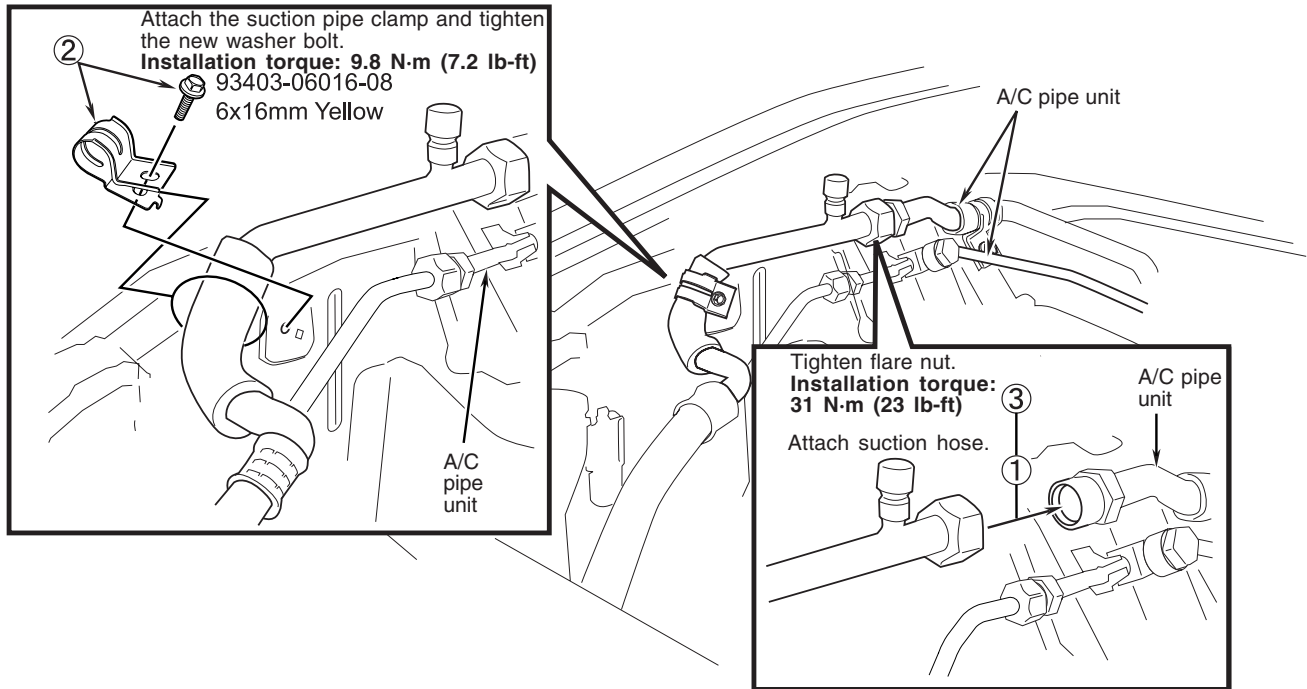
Install receiver pipe "A" and tighten loosely.



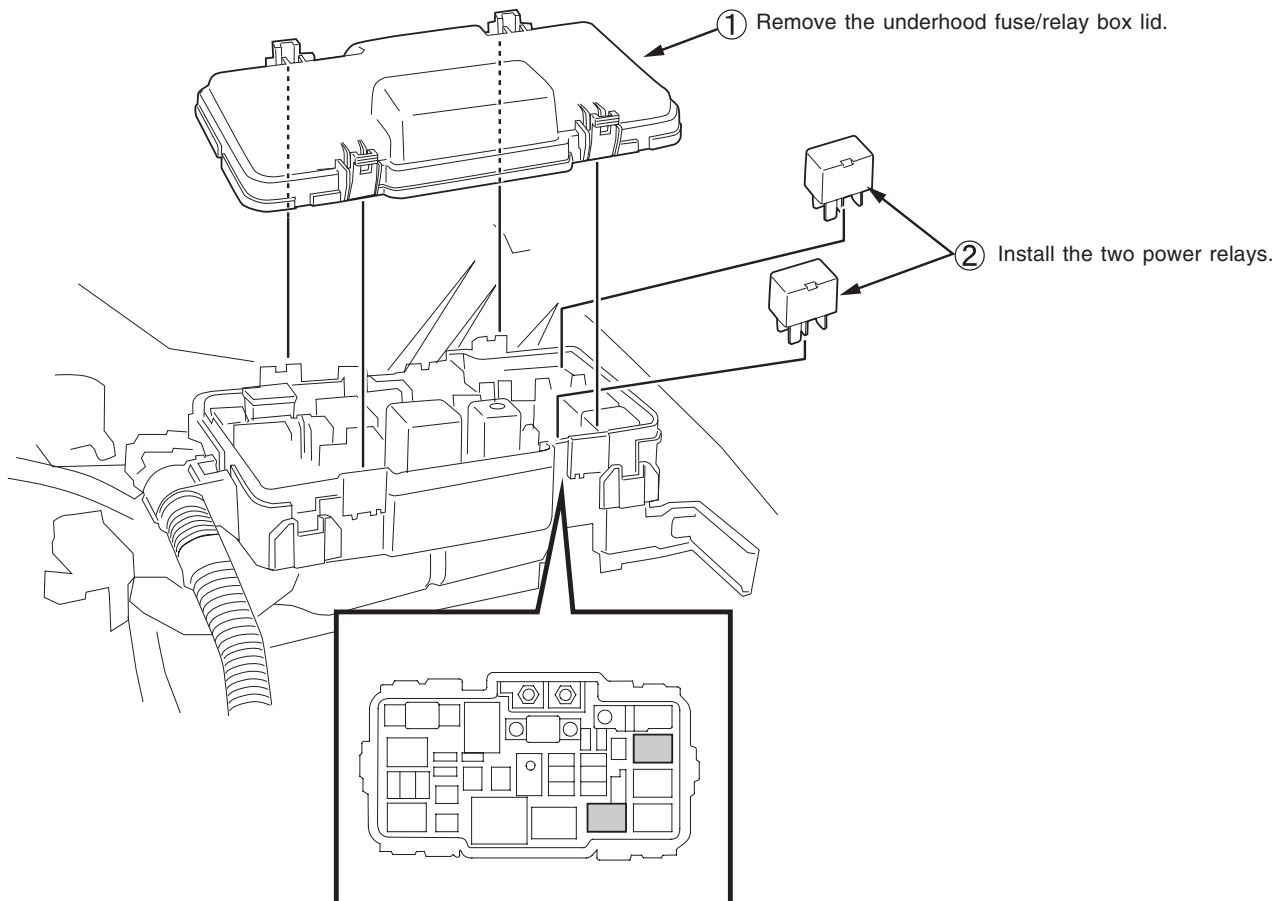
Untape (blue tape) the pressure switch connector, remove the protective cap from the pressure switch, and connect the harness to the pressure switch.



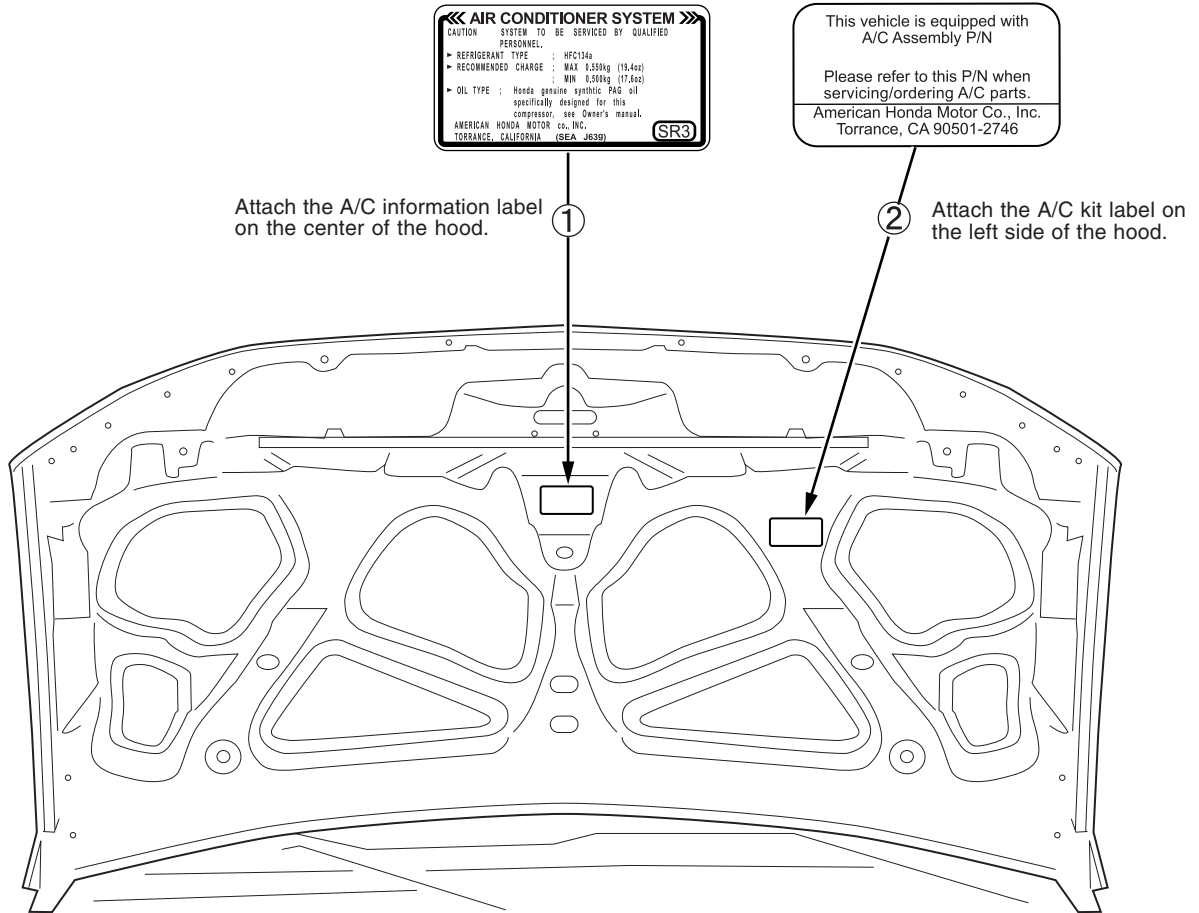
## 27. Tighten the suction hose.



## 28. Install the power relay.



## 29. Attach the A/C label.



## 30. Reinstall the removed engine room parts.

✓ Check if completed.

### Removed parts

- Bulkhead cover
- Front bumper
- Splash shield
- Power steering reservoir
- Bracket
- Main vehicle harness clamp
- Lid of the under-hood fuse/relay box
- Negative battery cable
- Reset the customer's radio stations

