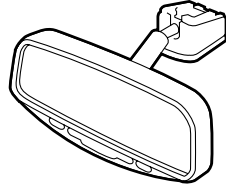


## PARTS LIST

### Automatic Day/Night Mirror Kit(sold separately): P/N 08V03-SDA-100B

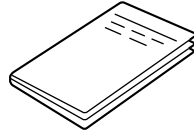
Day/night mirror



Spring

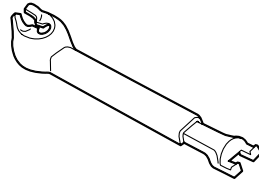


Owner's Manual

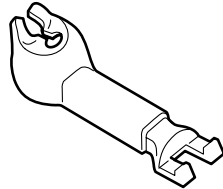


### Automatic Day/Night Mirror Attachment Kit (sold separately): P/N 08V03-SJC-101

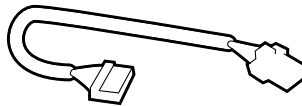
Upper and lower covers  
(Long type)



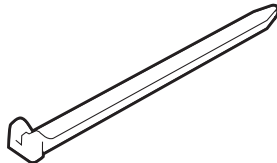
Upper and lower covers  
(Short type : Not used)



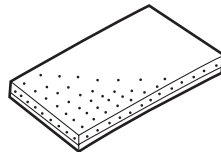
Mirror harness



3 Wire ties



EPT Sealer

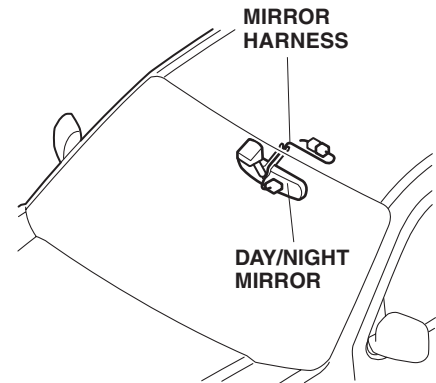


## TOOLS AND SUPPLIES REQUIRED

- Phillips screwdriver
- Flat-tip screwdriver
- Small flat-tip screwdriver
- 10 mm Combination wrench
- Diagonal cutters
- Ratchet
- 8 mm and 10 mm Socket
- Torque wrench
- Long nose pliers
- Isopropyl alcohol
- Shop towel

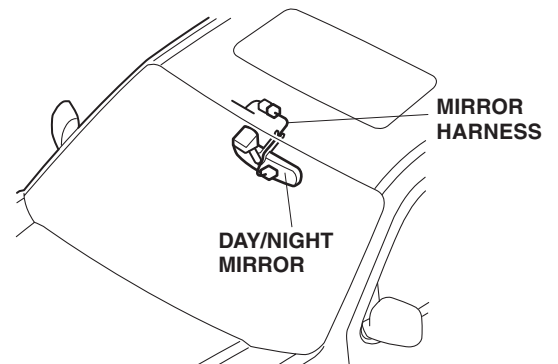
### Illustration of the Day/Night Mirror installed on the Vehicle

#### Without moonroof



4217060K

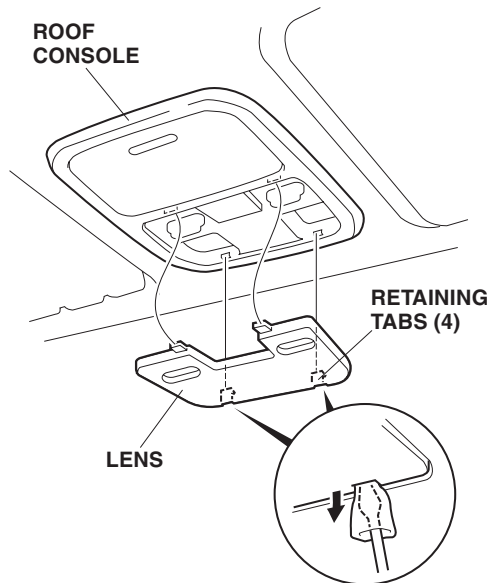
#### With moonroof



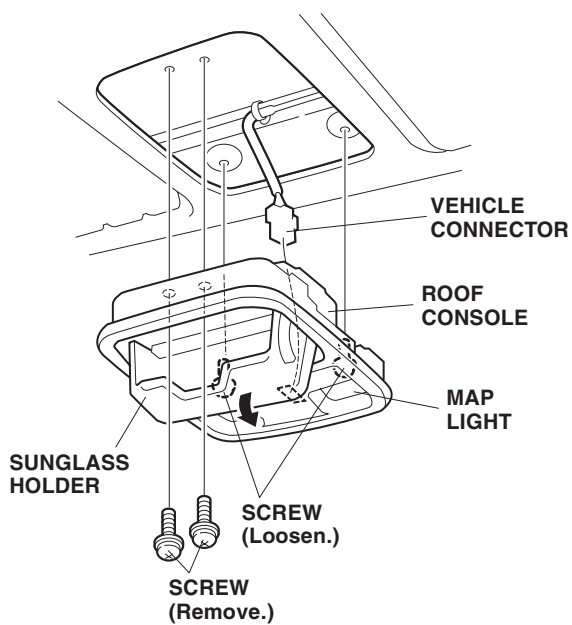
## INSTALLATION

**Customer Information:** The information in this installation instruction is intended for use only by skilled technicians who have the proper tools, equipment, and training to correctly and safely add equipment to your vehicle. These procedures should not be attempted by “do-it-yourselfers.”

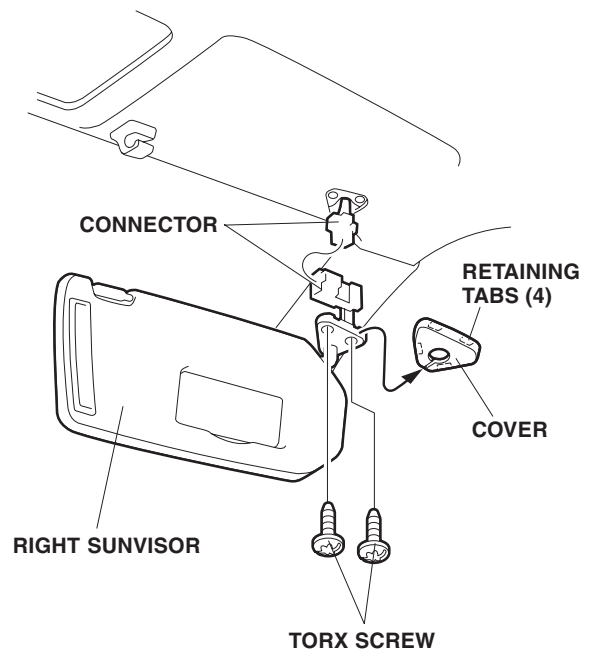
1. Make sure you have the anti-theft code for the radio, then write down the radio station presets.
2. Disconnect the negative cable from the battery.
3. Remove the lens from the roof console (four retaining tabs).



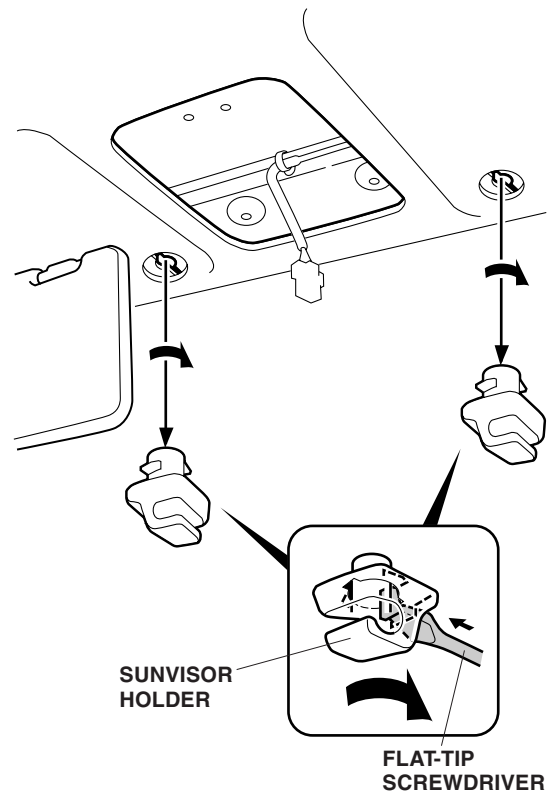
4. First remove two screws in sunglass holder then loosen two screws in map light area (near burds).
5. Remove the roof console (unplug one connector).



6. Remove the cover from the right sunvisor (four retaining tabs).

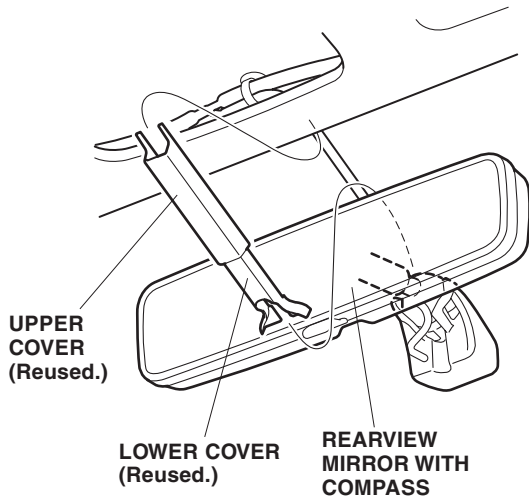


7. Remove the right sunvisor (two Torx screws and unplug the connector).
8. Remove the sunvisor holders. Using a flat-tip screwdriver, push the hook, and turn the holder 90°, then pull it out.

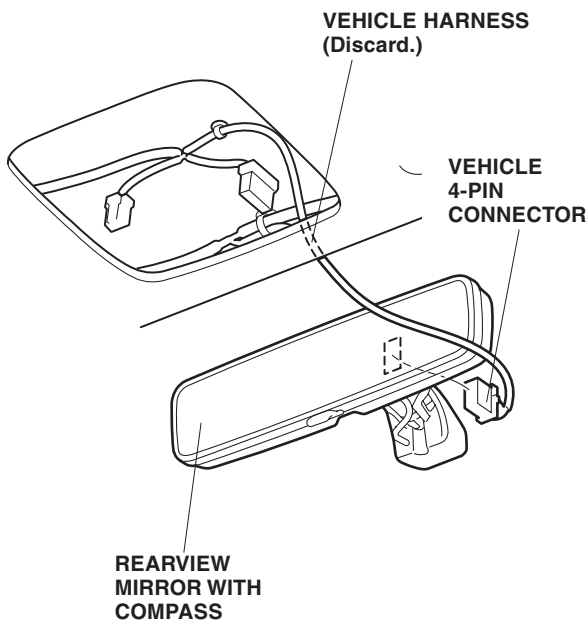


If the rearview mirror is compass equipped, continue with step 9; if not equipped, go to step 11.

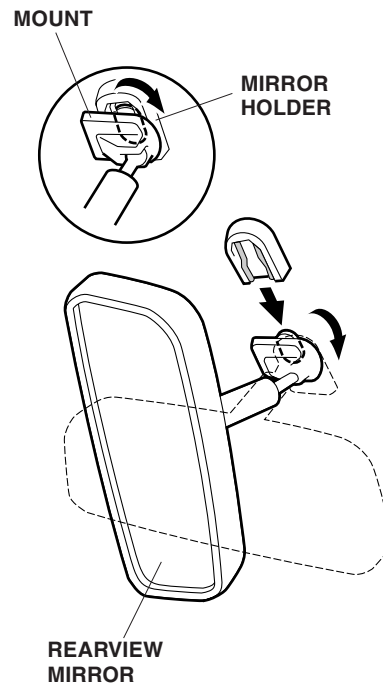
9. Remove the upper and lower cover (two retaining tabs).



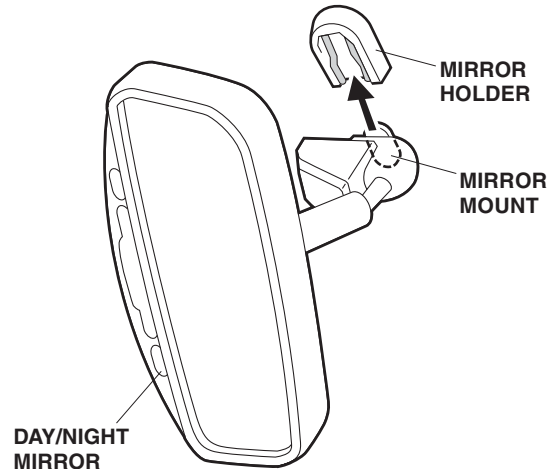
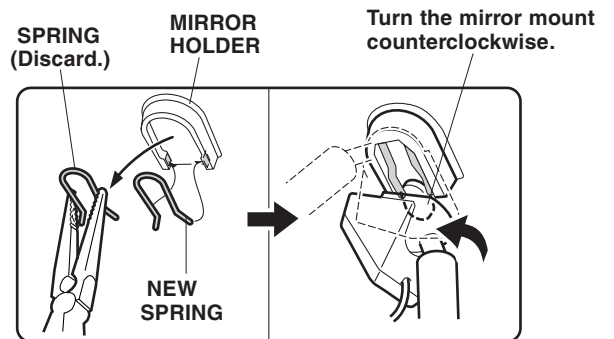
10. Disconnect the vehicle harness 4-pin connector from the vehicle harness and from the rearview mirror. Set the vehicle harness aside; it will not be reused.



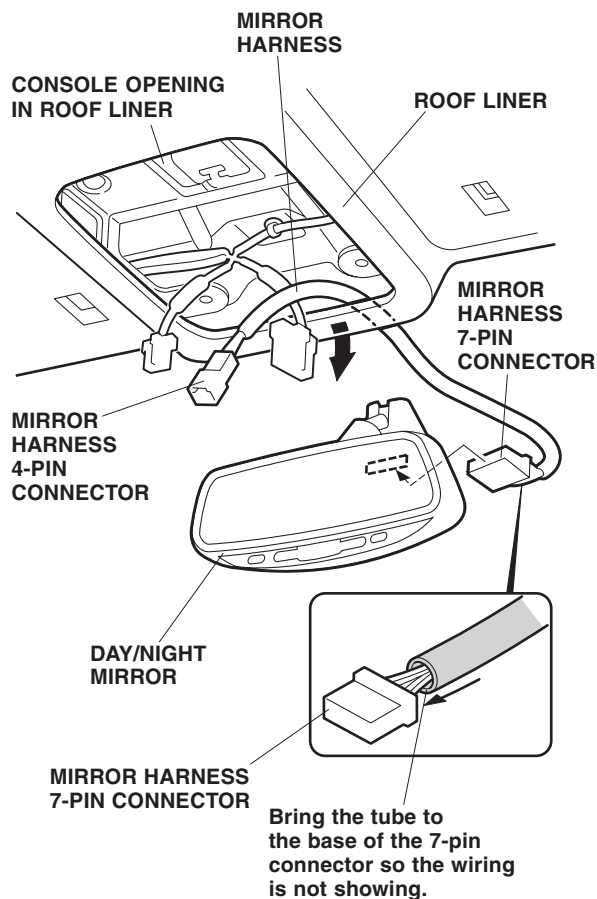
11. Remove the rearview mirror from the holder by rotating the mount clockwise.



12. Remove the spring, and install the new spring from the kit. Slide the day/night mirror mount onto the mirror holder, then turn the mirror mount counterclockwise as shown.



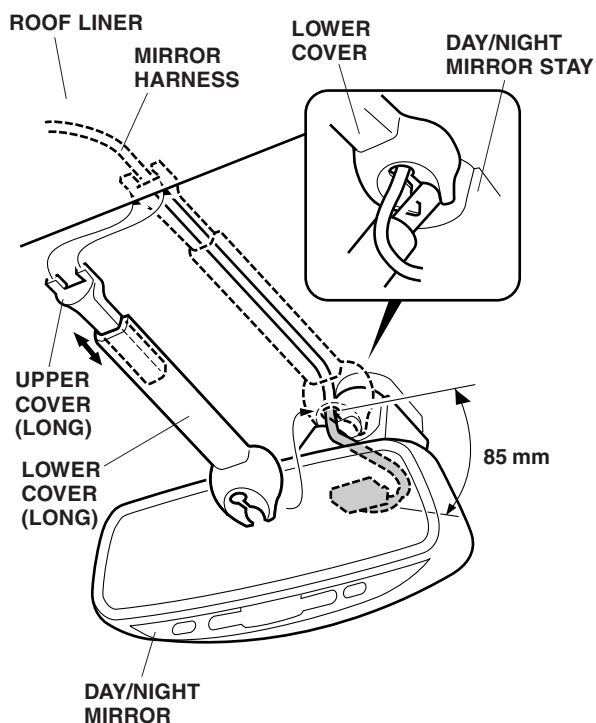
- Plug the mirror harness 7-pin connector into the rear of the mirror, then route the 4-pin connector up and out through the console opening in the roof liner. Check that the wiring at the base of the mirror harness 7-pin connector is not showing. If it is, bring the tube to the base of the 7-pin connector so the wiring is not showing.



- Attach the lower cover.

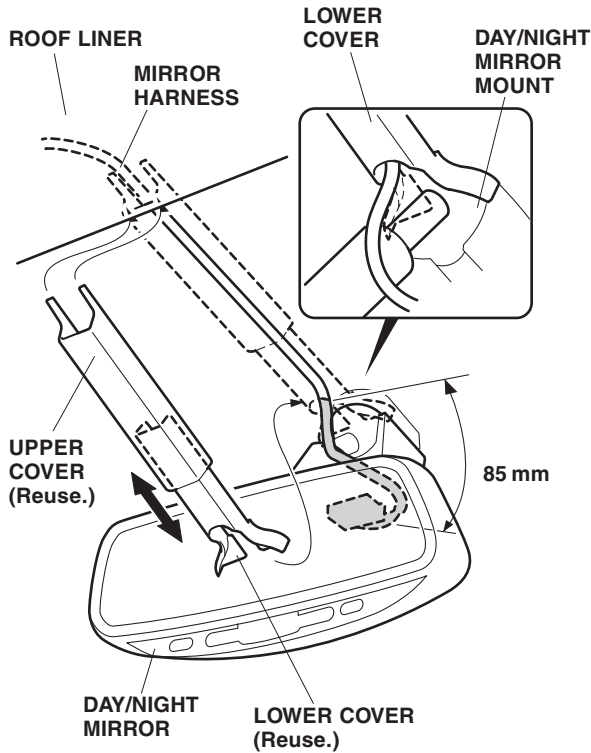
**Without compass:**

Measure the mirror harness in the area shown. Get the upper and lower cover in the kit, slide the end of the upper cover into the lower cover, then route the mirror harness through the grooves in the covers. Attach the lower cover to the stay of the mirror mount.



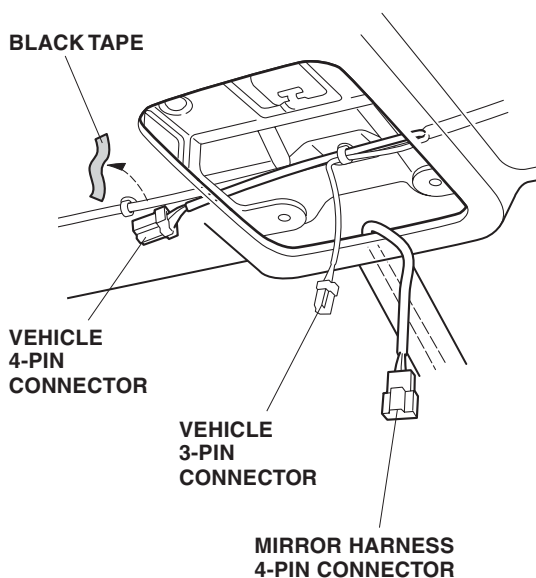
**With compass:**

Measure the mirror harness in the area shown. Get the upper and lower cover removed in step 6, slide the end of the upper cover into the lower cover, then route the mirror harness through the grooves in the covers. Attach the lower cover to the mirror mount.

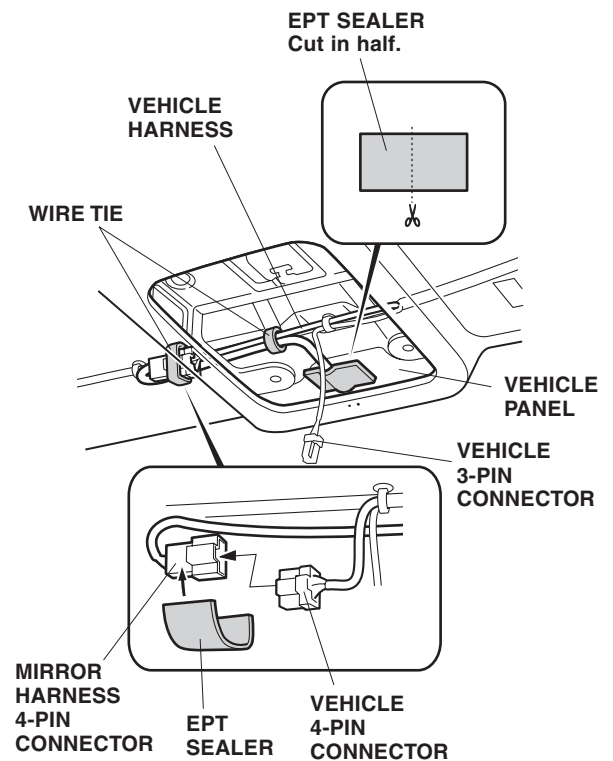


**Without moonroof:**

15. Locate the vehicle 4-pin connector black-taped to the vehicle harness, and remove the tape to free the connector.



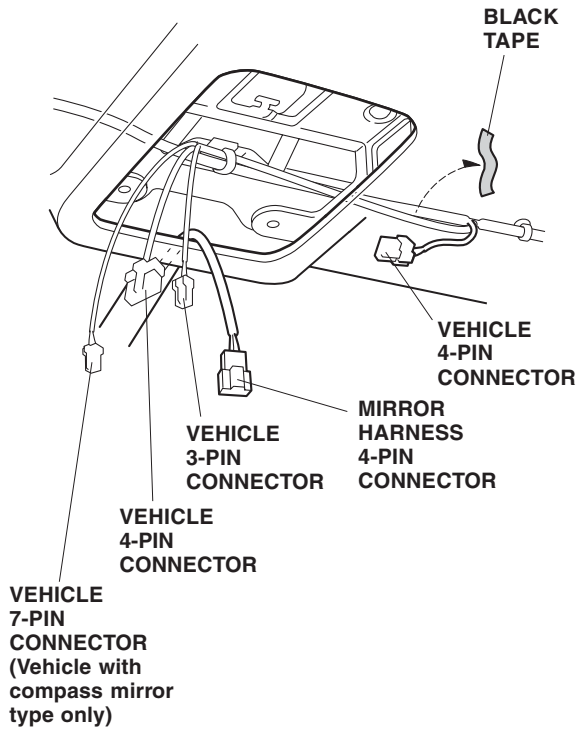
16. Plug the mirror harness 4-pin connector into the vehicle 4-pin connector.



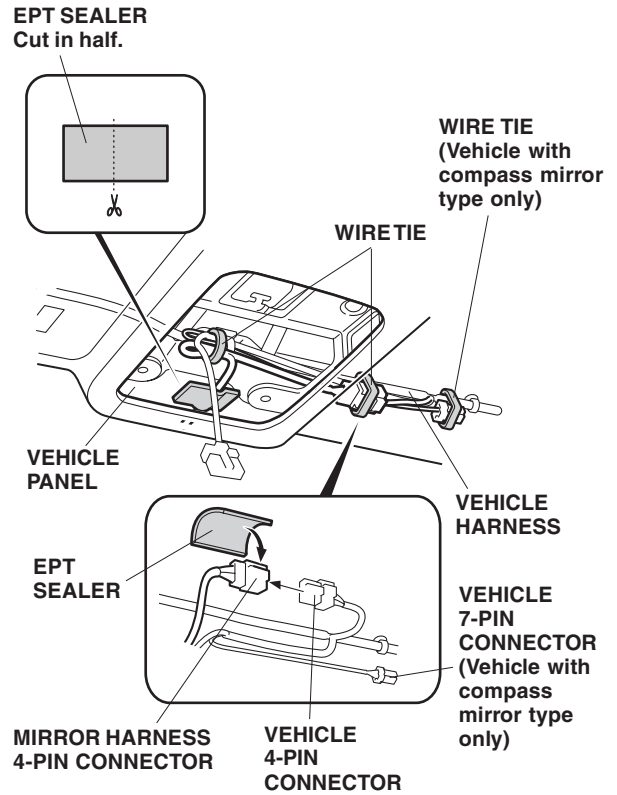
17. Cut the EPT sealer into exact halves. Wind one of the two halves of the EPT sealer you just cut onto the mirror harness 4-pin connector.
18. Secure the mirror harness to the vehicle harness with two wire ties.
19. Attach the mirror harness to the vehicle panel using another half of the EPT sealer you cut in step 17.

**With moonroof:**

20. Locate the vehicle 4-pin connector black-taped to the vehicle harness, and remove the tape to free the connector.



21. Plug the mirror harness 4-pin connector into the vehicle 4-pin connector.



22. Cut the EPT sealer into exact halves. Wind one of the two halves of the EPT sealer you just cut onto the mirror harness 4-pin connector.
23. Secure the vehicle harness and mirror harness to the vehicle harness with three wire ties.
24. Using isopropyl alcohol on a shop towel, clean the areas where the EPT sealer will attach. Attach the mirror harness to the vehicle panel using another half of the EPT sealer you cut in step 22.

25. Check that all wire harnesses and cables are routed properly and that all connectors are plugged in.
26. Reinstall all removed parts. Check that all clips and fasteners are installed securely.
27. Reconnect the negative cable to the battery.
28. Enter the customer's radio anti-theft code, and reset the radio station presets,
29. Reset the clock.
30. Check the operation of the automatic day/night mirror according to the Information Manual supplied.

NOTE: Whenever the battery is disconnected, the driver's AUTO function is disabled.

31. Start the engine. Push down on the driver's window switch until the window is fully open.
32. Pull up on the driver's window switch fully to close the window completely, then hold the switch for 2 seconds or more.
33. Test the window AUTO function.